

**BALDOR<sup>®</sup> • RELIANCE** 

**Product Information Packet**

**330B**

**.75HP,3000/3600RPM,3PH,50/60HZ,3524M**

Part Detail							
Revision:	AX	Status:	PRD/A	Change #:		Proprietary:	No
Type:	AC	Elec. Spec:	G8WG0013	CD Diagram:	CD0005	Mfg Plant:	
Mech. Spec:	G8-170	Layout:	G8LY0170	Poles:	02	Created Date:	08-08-2007
Base:	RG	Eff. Date:	07-20-2018	Leads:	9#18 12" LG		Y

Specs			
Nameplate Output:	.75		
Product Style:	GRINDER		

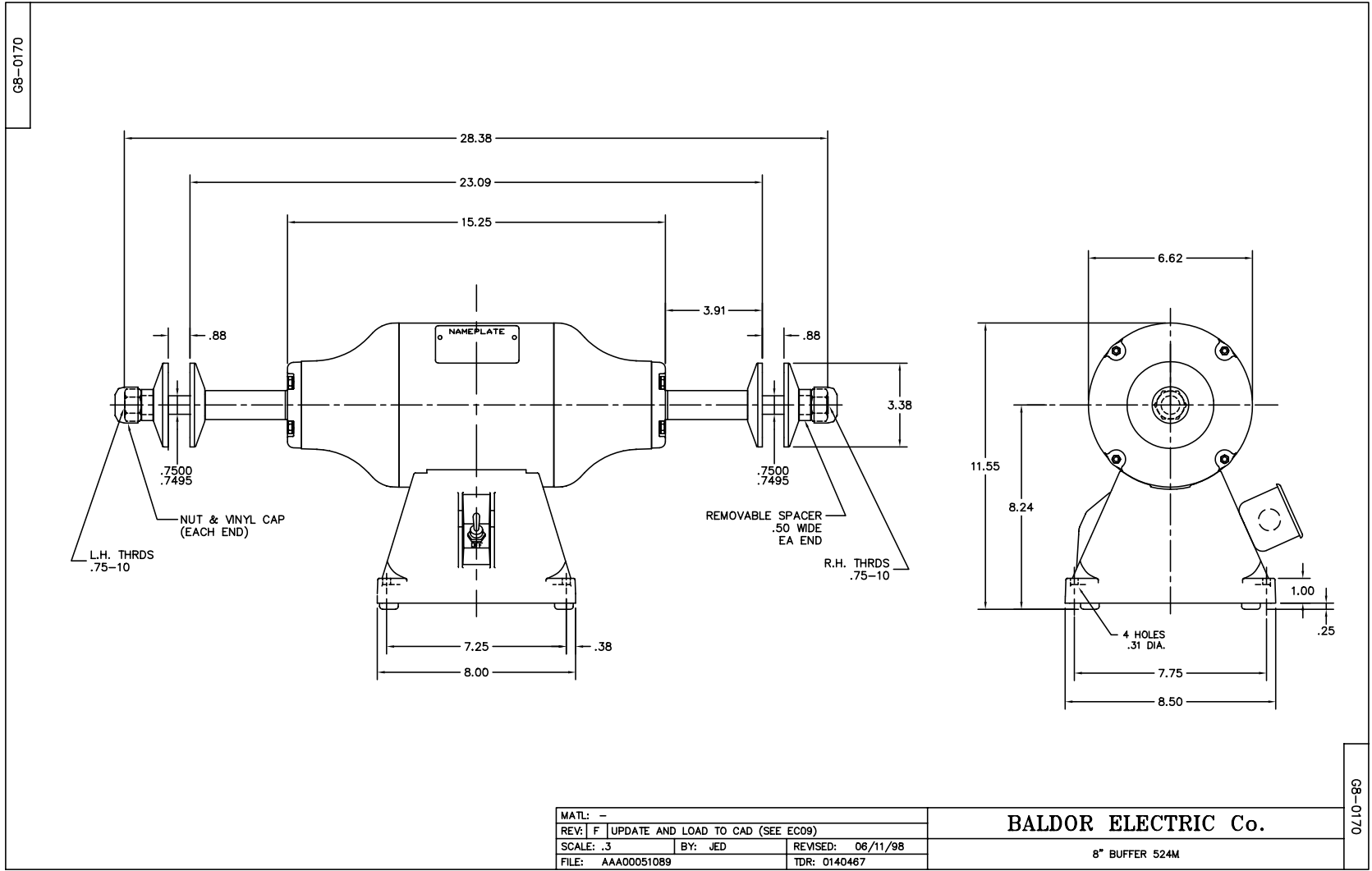
<b>Nameplate NP3411L</b>			
<b>CAT.NO.</b>	330B		
<b>HP</b>	.75	<b>VOLTS</b>	208-230/460
<b>PHASE</b>	3	<b>AMPS</b>	1.5-1.4/.7
<b>HZ</b>	50//60	<b>RPM</b>	3000//3600
<b>SER.NO</b>			
<b>SPEC.</b>	G8-170-13		
<b>BLANK</b>			

Parts List		
Part Number	Description	Quantity
SA037658	SA G8-170-13	1.000 EA
RA033683	RA G8-170-13	1.000 EA
G8BA3000A01	BASE, MACH	1.000 EA
19XX2510A14	1/4-10 X 7/8 HEX HD PLASTITE SCREW	4.000 EA
HW1000A25	1/4 SAE FLAT WASHER (FS)	4.000 EA
WD4502A01A02	CONDUIT BOX W/KNOCKOUTS, FOR 7,8 & 10 GR	1.000 EA
51XB1016A06	10-16X3/8 HXWSSLD SERTYB	2.000 EA
WD4503A01	T&B 58 C 1, OUTLET BOX LID	1.000 EA
G8CB4500A02	G8-272 BASE COVER,STPD X PLATED	1.000 EA
RM1005A01SP	BUMPER- #2089 (R-R CO)	4.000 EA
15XF1032A10	10-32X5/8 PIN HD PHL TY FSEE JT	4.000 EA
G8EP3900A01SP	ENDPLATE, MACH	1.000 EA
G8EP3900A01SP	ENDPLATE, MACH	1.000 EA
HW5100A06	W2420-025 WVY WSHR (WB)	2.000 EA
HA1000A34	DR2463A .02 BRG GUARD B N	2.000 EA
HA1025A03	FELT WSH 2.1875 OD X 1.170 ID X .25 #321	2.000 EA
19XW2520A16	SCREW,1/4-20X1 TAPTITE-II OR ROLOC 91	8.000 EA
HA3100A14	THRUBOLT 10-32 X 7.875	4.000 EA
XY1032A02	10-32 HEX NUT DIRECTIONAL SERRATION	4.000 EA
HA6098	WHEEL FLANGE, CAST	4.000 EA
HW3020E04	1/8 X 3/8 A GROOVE PIN (DRIV-LOCK #118	2.000 EA
XY7510A12SP	3/4-10 NUT R.H. HEX (NC) ZINC PLATED	1.000 EA
XY7510A62SP	3/4-10 NUT L.H. HEX (NC) (F/S)	1.000 EA
RM1010A06	VNYL CAP 1.125-14 701-89 BLACK S/R Q=	2.000 EA

<b>Parts List (continued)</b>		
<b>Part Number</b>	<b>Description</b>	<b>Quantity</b>
HA2048A01	G8-27 SP 1-1/4 DIA C.R.ST(WELKER)	2.000 EA
MG2000A02	RUST VETO-377-HF HOUGHTON	0.001 GA
85XU0407S04	4X1/4 U DRIVE PIN STAINLESS	1.000 EA
SP9004	SWITCH HKA270-73 CARLING	1.000 EA
MJ1000A02	GREASE, MOBIL POLYREX EM - 124047	0.050 LB
MG1000G01	MUNSELL 5.93PB 3.81/ 2.71	0.017 GA
LB1009N	LABEL,ROTATION DIRECTION (ON ROLLS)	1.000 EA
LB1091	LABEL, WARNING BUFFERS	1.000 EA
LB1119N	WARNING LABEL	1.000 EA
LC0005B01	CONN LABEL GRINDER/BUFFER X	1.000 EA
NP3411L	ALUM NAMEPLATE - BALDOR BUFFER CSA	1.000 EA
37PA1016	PKG GRP, PRINT PK1035A06	1.000 EA
MN906	Baldor Buffer 6/13	1.000 EA

<b>Accessories</b>		
<b>Part Number</b>	<b>Description</b>	<b>Multiplier</b>
GA16	PEDESTAL INDUSTRIAL, CAST IRON 6" - 10"	A8
GA14	PEDESTAL FABRICATED STEEL W/SHELVES	A8
GA20	PEDESTAL INDUSTRIAL, CAST IRON 8"-14"	A8
GA20E	PEDESTAL LIGHT INDUSTRIAL,STEEL	A8
A82	8" COTTON BUFFING WHEEL 3/4 " BORE	A8

No performance data has been  
assigned to this product.



68-0170

68-0170

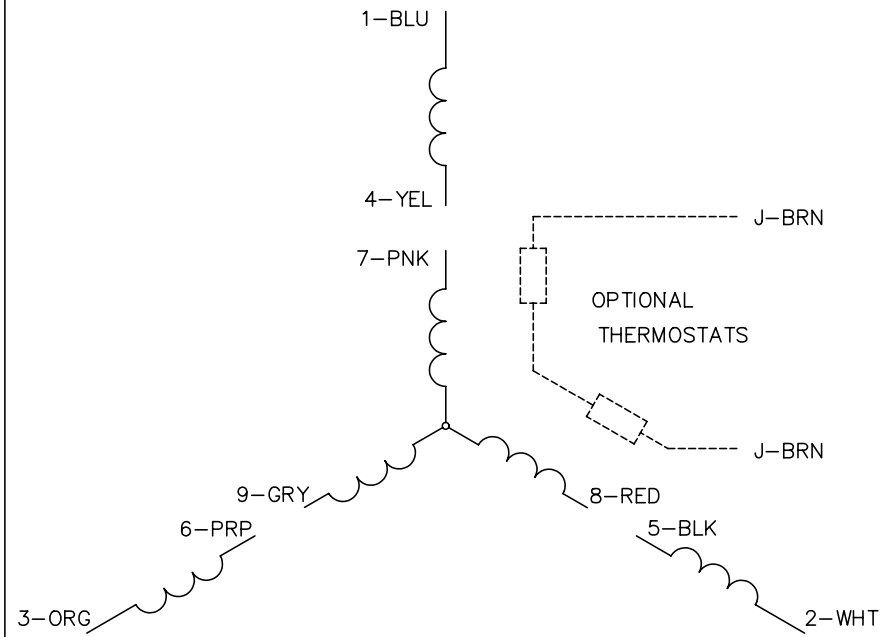
MATERIAL: -		
REVISION: F   UPDATE AND LOAD TO CAD (SEE EC09)		
SCALE: .3	BY: JED	REVISED: 06/11/98
FILE: AAA00051089		TDR: 0140467

**BALDOR ELECTRIC Co.**

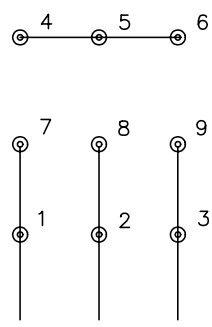
8" BUFFER 524M



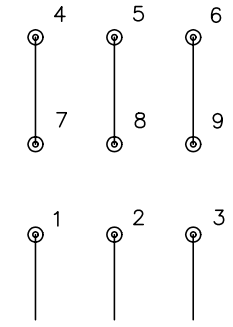
CD0005



LOW VOLTAGE (2Y)



HIGH VOLTAGE (1Y)



NOTES:

1. INTERCHANGE ANY TWO LINE LEADS TO REVERSE ROTATION.
2. OPTIONAL THERMOSTATS ARE PROVIDED WHEN SPECIFIED.
3. ACTUAL NUMBER OF INTERNAL PARALLEL CIRCUITS MAY BE A MULTIPLE OF THOSE SHOWN ABOVE.
4. LEAD COLORS ARE OPTIONAL. LEADS MUST ALWAYS BE NUMBERED AS SHOWN.

REV. DESC: REVISE TO SHOW OPTIONAL COLORS			
REV. LTR: E	BY: JLP	REVISED: 01/19/99 10:15	TDR: 0171435
900000		FILE: AAA00005140	MDL: -
		MTL: -	

**BALDOR ELECTRIC Co.**

3PH, DV, 9 LEADS

CD0005