

# SCHOOL BENDER

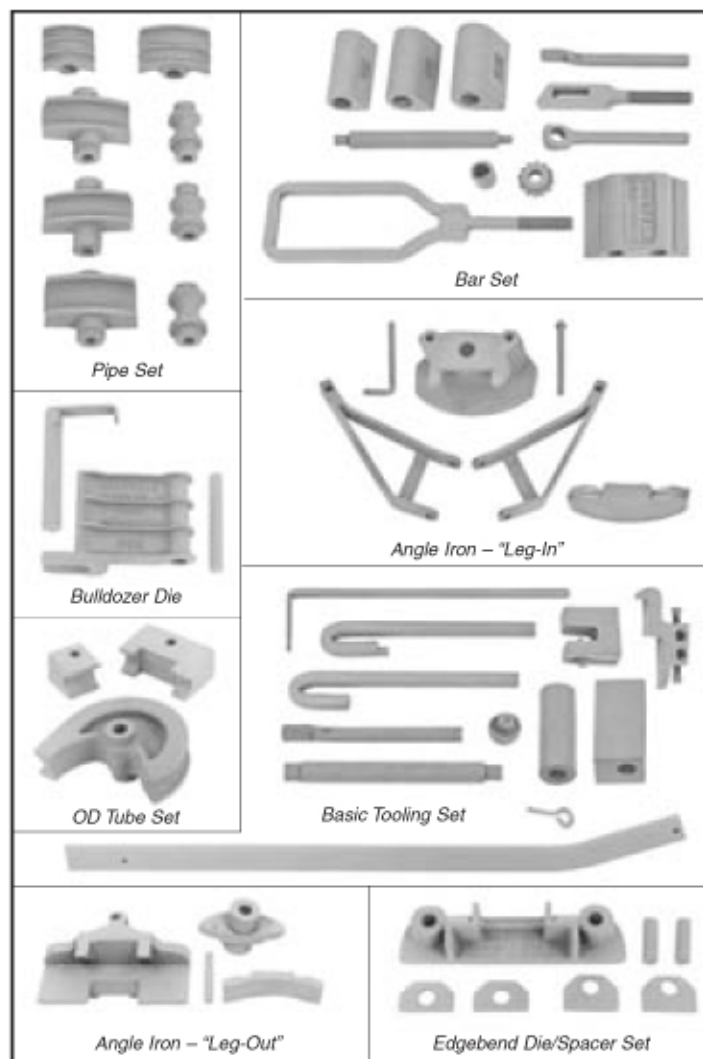
## HOSSFELD UNIVERSAL® Model No. 2 Bender



**Safety Note:** Hydraulic Power is recommended when bending the following sizes: 1-1/4" – 2" OD Tube, 1" – 2" Schedule 40 Pipe, and other heavy material.



The HOSSFELD UNIVERSAL® SCHOOL BENDER is sold with a set of basic tooling sizes. Additional tooling sold separately.



## HOSSFELD UNIVERSAL® Model No. 2 School Bender with Pedestal Stand

46025 . . . . . 477 lbs Gross Weight

### One Versatile Bender For All Bending Problems

The HOSSFELD UNIVERSAL® SCHOOL BENDER is ideal for Schools, Vocational Schools, Universities or shops who want a bender equipped with the most useful standard sizes of tooling at one price. The School Bender consists of a **Model No. 2 Bender** and a comprehensive set of tooling that will let you and your students perform most standard bends. The unusual versatility and capacity of the HOSSFELD UNIVERSAL® Bender make it the ideal machine for school shop instruction and use. This one tool with the standard dies will produce a wide variety of bends on various materials: sharp, square bends on Round, Square or Flat stock; radius bends to practically any size and on practically any material such as Bar or Flat stock, Pipe or Tube, Angle Iron and Handrail Cap; Scrolls, Lambs' Tongues and Volutes for ornamental work.\* With minimum practice, your students can turn out professional looking work. At the same time, they will be learning the fundamentals of metal forming, its advantages and limitations, through actual experience.

The only tool that offers the capacity and variety of bending operations in one machine is the HOSSFELD UNIVERSAL® Bender.

**Call for additional details on School Bender package.**



\* Additional tooling may be necessary for some of these bends.

### 46025 School Bender consists of the following:

PART NO.	DESCRIPTION	JOB	CAPACITY
46000	HOSSFELD UNIVERSAL® Model No. 2 Bender		
20768	Pedestal Stand		
42015	Instruction Manual		
46001	General Purpose Toolset for Bending Pipe	Cold-Bend Schedule 40 Pipe	1/4" – 2" Pipe
46002	General Purpose Toolset for Bending Bar	Cold-Bend Hot Rolled Low Carbon Steel Bar Stock (AISI 1020)	Various Sizes, Flat and Bar
21100	60B Bulldozer Die Set	Make closed Eyes and sharp bends in Flat Stock	3/16" x 4-1/2" Flat
20779	School Toolset for Bending Angle Iron, Leg-In	Includes 30B Master Die Assembly and 31B 15" Inner Radius Block	3/16" x 2" x 2"
20985	School Toolset for Bending Angle Iron, Leg-Out	Includes: 50B Master Die Assembly and 5", 7", 18" and 24" 51B Outer/52B Inner Radius Block Sets	3/16" x 2" x 2"
22589	180° OD Tube Die Set	3/4" OD x 2" CLR	.065" Wall or heavier 3/4" OD
21218	64B Scroll Die, 2-1/2" Dia. Single-turn	Bend Single-turn 2-1/2" Scrolls in Flat and Bar stock	3/16" x 3/4" Flat
20949	51B2 Edgebend Die Set	Edgebend Flat Bar stock. Use with 50B Outbend Master Die and 52B Inner Radius Blocks, 5"/7" and 18"/24", included	3/8" x 1-3/4"
20942	51B3 Edgebend Spacer Set, 1/4" thick	Adjust Edgebend Die for narrow or wide stock	