

BALDOR® • RELIANCE 

Product Information Packet

762RE

.5HP,3600RPM,1PH,60HZ,3420C,GRND

| Part Detail | | | | | | | |
|-------------|--------|-------------|------------|-------------|--------|---------------|----|
| Revision: | AY | Status: | PRD/A | Change #: | | Proprietary: | No |
| Type: | AC | Elec. Spec: | G7WG0030 | CD Diagram: | CD0121 | Mfg Plant: | |
| Mech. Spec: | G7-304 | Layout: | G7LY0304 | Poles: | 02 | Created Date: | |
| Base: | RG | Eff. Date: | 03-27-2019 | Leads: | 4#18 | | |

| Specs | | | |
|-------------------|---------|--|--|
| Nameplate Output: | .5 | | |
| Product Style: | GRINDER | | |

| | |
|-------------------------|------------------|
| Nameplate NP0235 | |
| CAT.NO. | 762RE |
| HP | .5 |
| PHASE | 1 |
| HZ | 60 |
| SER.NO | |
| SPEC. | G7-304-30 |
| | VOLTS 115 |
| | AMPS 3.4 |
| | RPM 3600 |

| Parts List | | |
|----------------|--|----------|
| Part Number | Description | Quantity |
| SA004983 | SA G7-304-30 | 1.000 EA |
| RA002333 | RA G7-304-30 | 1.000 EA |
| OC3006F12 | CYL OIL CAP 6MFD/370V | 1.000 EA |
| G7BA3000 | G7-286 BASE DIE CAST | 1.000 EA |
| LD5001A07 | CORD & PLUG ASSY 18-3 SJT .33 DIA. 10 AM | 1.000 EA |
| WD4102A01 | SR-6L-1 HEYCO STRN RELIEF OR 23MPO6L10 M | 1.000 EA |
| WD1000A16 | 2-520128-2 AMP FLAG TERMINAL(4M/RL) | 2.000 EA |
| SP9000SP | 80600BJ A-H OR 1520237-2 TYCO;2PST,125/2 | 1.000 EA |
| HW1003A50 | LOCKWASHER,1/2",EXT.TOOTHZINC PLATED | 1.000 EA |
| G7CB4500 | BASE COVER PLATE 7" GRINDER | 1.000 EA |
| 51XW1032A06 | 10-32 X .38, TAPTITE II, HEX WSHR SLTD S | 2.000 EA |
| RM1005A01A | BASE FOOT & SCREW ASSLY | 4.000 EA |
| 11XW1032G06 | 10-32 X .38, TAPTITE II, HEX WSHR SLTD U | 1.000 EA |
| HW3001B01 | BRASS CUP WASHER, FOR #10 SCREW | 1.000 EA |
| HW5100A03 | WAVY WASHER (W1543-017) | 2.000 EA |
| G7EP3900A01 | ENDPLATE, MACH | 1.000 EA |
| G7EP3900A01 | ENDPLATE, MACH | 1.000 EA |
| XY1032A02 | 10-32 HEX NUT DIRECTIONAL SERRATION | 4.000 EA |
| G7FH1800A01GSP | GRINDER GUARD, MACH | 1.000 EA |
| G7FH1801A01 | GRINDER GUARD COVER, MACH | 1.000 EA |
| 10XF2520A16 | SCREW, HEX HD, ZN X | 3.000 EA |
| 10XN2520A16 | 1/4-20 X 1 HEX HEAD CAP SCR, ZINC PLATED | 4.000 EA |
| HA6096A01SP | WHEEL FLANGE, MACH | 4.000 EA |
| HA2040A01SP | SPACER,CRST(WELKER#824500 | 2.000 EA |

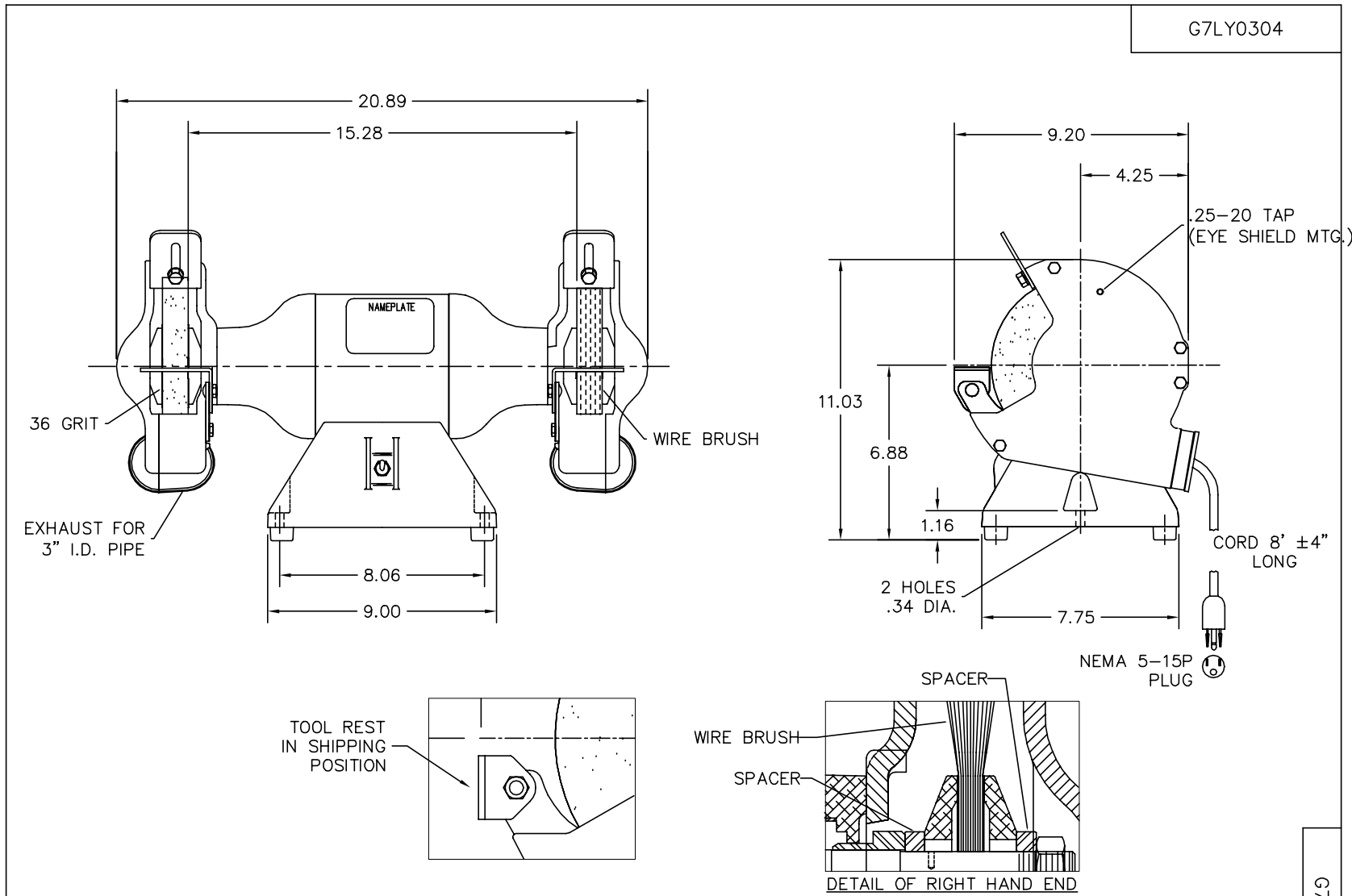
| Parts List (continued) | | |
|------------------------|--|----------|
| Part Number | Description | Quantity |
| HA2047A01 | SPACER, 7" GR(WELKER#82452000 | 2.000 EA |
| HW3021C04 | SPRG PIN 3/32 DIA .375LGH DRIV-LOK | 2.000 EA |
| G7AP3002 | WHEEL, WIRE BRUSH, #W70 W70 X | 1.000 EA |
| G7AP3000A01 | WHEEL, 7 X 1 X 36 GRIT B73 X | 1.000 EA |
| XY6311A12SP | HEX NUT 5/8-11 | 1.000 EA |
| XY6311A62 | 5/8-11 NUT L.H. HEX (NC)X (F/S) | 1.000 EA |
| G7FH1802A01GSP | GRINDER GUARD, MACH | 1.000 EA |
| G7FH1803A01GSP | GRINDER GUARD COVER, MACH | 1.000 EA |
| 10XF2520A16 | SCREW, HEX HD, ZN X | 3.000 EA |
| 10XN2520A16 | 1/4-20 X 1 HEX HEAD CAP SCR, ZINC PLATED | 4.000 EA |
| G7AP5010A01 | 7" TOOL REST ASSEMBLY L.H.10 45819107 | 1.000 EA |
| 10XN2520A08 | 1/4-20X1/2 HEX HEAD CAP | 1.000 EA |
| HW1001A25 | LOCKWASHER 1/4, ZINC PLT .493 OD, .255 I | 1.000 EA |
| HW1000A25 | 1/4 SAE FLAT WASHER (FS) | 1.000 EA |
| HW1001A25 | LOCKWASHER 1/4, ZINC PLT .493 OD, .255 I | 1.000 EA |
| HW1000A25 | 1/4 SAE FLAT WASHER (FS) | 1.000 EA |
| G7AP5010A02 | 7" TOOL REST ASSEMBLY R.H.10 45818107 | 1.000 EA |
| 10XN2520A08 | 1/4-20X1/2 HEX HEAD CAP | 1.000 EA |
| G6AP1002A01 | SPARK BREAKER-6",7" & 8" GRINDERS | 2.000 EA |
| 10XN3118A10 | 5/16-18 X 5/8 HEX HEAD CAP | 2.000 EA |
| HW1000A31 | 5/16 SAE FL WSHR NARROW, ID=.344, OD=.62 | 2.000 EA |
| HW1001A31 | LOCKWASHER 5/16, ZINC PLT.591 OD, .319 I | 2.000 EA |
| HA6053A01ZP | CLAMP, CAPACITOR 2" DIA, WHITE ZINC PLAT | 1.000 EA |
| 51XN1032A06 | 10-32 X .38 HEX SLOTTED SERRATED WASHER | 2.000 EA |

Product Information Packet: 762RE - .5HP,3600RPM,1PH,60HZ,3420C,GRND

| | | |
|-------------|--|----------|
| XY1032A02 | 10-32 HEX NUT DIRECTIONAL SERRATION | 2.000 EA |
| G7AP5001A01 | EYE SHIELD ASSEM.-7",8",10",12"&14"GRIND | 1.000 EA |
| MG1000R01 | 400-0113 H/F BALDOR BIG RED LAC (5G) | 0.014 GA |
| 85XU0407S04 | 4X1/4 U DRIVE PIN STAINLESS | 2.000 EA |
| WD4006B01 | TYPE O/B+ 3M SCOTCHLOK WIRE CONNECTOR | 4.000 EA |
| HA3100A29 | THRUBOLT 10-32 X 7.00 | 4.000 EA |
| LB1008 | LABEL, UL | 1.000 EA |
| LB1009N | LABEL,ROTATION DIRECTION (ON ROLLS) | 1.000 EA |
| LB1030 | LABEL, OSHA (ON ROLLS) | 1.000 EA |
| LB1307 | LABEL, WARNING | 1.000 EA |
| LB1119N | WARNING LABEL | 1.000 EA |
| LC0279A01 | 1PH, DV, FIX, GRINDER, CONN FOR LV | 1.000 EA |
| NP0235 | NP- 8" GR, BLANK W/CSA | 1.000 EA |
| 35PA1007 | PKG GRP, PRINT PK1034A06 | 1.000 EA |
| MN907 | INSTR MANUAL GRINDER-BUFFER/WIRE BRUSH | 1.000 EA |

| Accessories | | |
|--------------------|---|-------------------|
| Part Number | Description | Multiplier |
| GA16RE | PEDESTAL LIGHT INDUSTRIAL,STEEL-RED | A8 |
| GA14R | PEDESTAL FABRICATED STEEL W/SHELVES-RED | A8 |
| GA16R | PEDESTAL IND., CAST IRON 6" - 10" RED | A8 |
| B73 | 7" 36 GRIT GRINDING WHEEL | A8 |
| B74 | 7" 60 GRIT GRINDING WHEEL | A8 |
| W70 | W70 WIRE BRUSH WHEEL | A8 |
| GA9R | PAIR LIGHTED EYESHIELDS-RED | A8 |
| GA9SR | PAIR LIGHTED EYESHIELD W/ON-OFF-RED | A8 |
| BQ1-015-CC | 1PH Brake, NEMA 1,110-125 VAC, 50/60Hz | P1 |
| BQ1-015-CP | 1PH Brake, Panel 110-125 VAC, 50/60 Hz | P1 |

No performance data has been
assigned to this product.



G7LY0304

CUSTOMER IS RESPONSIBLE FOR DETERMINING THAT MOTOR PERFORMANCE IS SUITABLE IN THE APPLICATION.

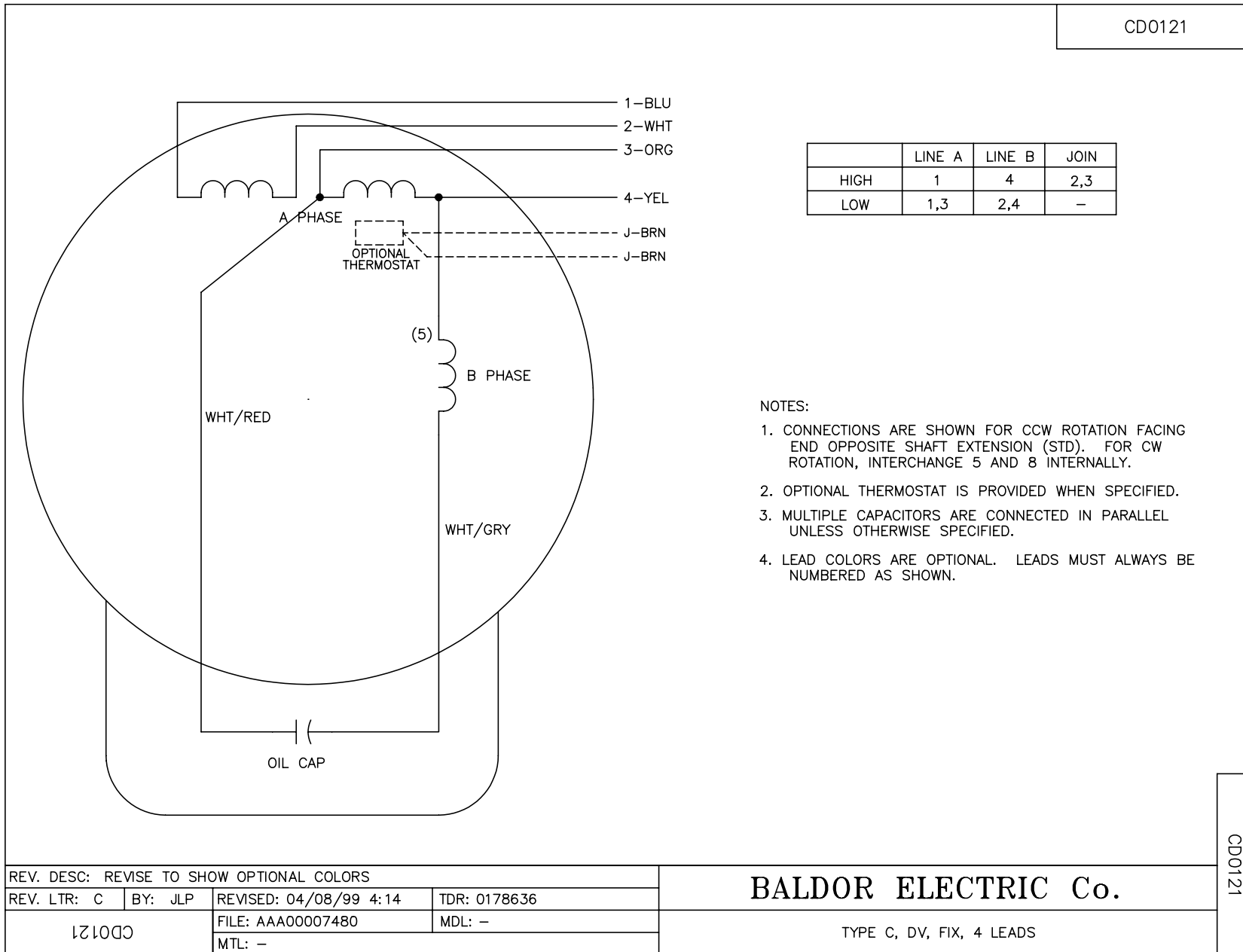
| | | | |
|---|---------|------------------------------|---------------|
| REV. DESC: ADDED TOOL REST SHIPPING POSITION VIEW | | | |
| REV. LTR: G | BY: YTD | REVISED: 08:31:33 07/23/2002 | TDR: 256297 |
| G7LY0304 | | FILE: AAA00042487 | REF: G7LY0304 |
| | | MTL: - | |

BALDOR ELECTRIC Co.

STD. 7" UTILITY GRINDER-BUFFER MODEL 34C 115V

G7LY0304

CD0121



| | LINE A | LINE B | JOIN |
|------|--------|--------|------|
| HIGH | 1 | 4 | 2,3 |
| LOW | 1,3 | 2,4 | - |

NOTES:

1. CONNECTIONS ARE SHOWN FOR CCW ROTATION FACING END OPPOSITE SHAFT EXTENSION (STD). FOR CW ROTATION, INTERCHANGE 5 AND 8 INTERNALLY.
2. OPTIONAL THERMOSTAT IS PROVIDED WHEN SPECIFIED.
3. MULTIPLE CAPACITORS ARE CONNECTED IN PARALLEL UNLESS OTHERWISE SPECIFIED.
4. LEAD COLORS ARE OPTIONAL. LEADS MUST ALWAYS BE NUMBERED AS SHOWN.

| | | | |
|---|---------|------------------------|--------------|
| REV. DESC: REVISE TO SHOW OPTIONAL COLORS | | | |
| REV. LTR: C | BY: JLP | REVISED: 04/08/99 4:14 | TDR: 0178636 |
| CD0121 | | FILE: AAA00007480 | MDL: - |
| | | MTL: - | |

BALDOR ELECTRIC Co.

TYPE C, DV, FIX, 4 LEADS

CD0121