

BALDOR® • RELIANCE 

Product Information Packet

8250W

.75HP, 3600RPM, 1PH, 60HZ, 3524C, GRND

| Part Detail | | | | | | | |
|-------------|--------|-------------|------------|-------------|--------|---------------|------------|
| Revision: | BD | Status: | PRD/A | Change #: | | Proprietary: | No |
| Type: | AC | Elec. Spec: | G8WG0011 | CD Diagram: | CD0279 | Mfg Plant: | |
| Mech. Spec: | G8-167 | Layout: | G8LY0167 | Poles: | 02 | Created Date: | 08-08-2007 |
| Base: | RG | Eff. Date: | 07-20-2018 | Leads: | 4#18 | | |

| Specs | | | |
|-------------------|---------|--|--|
| Nameplate Output: | .75 | | |
| Product Style: | GRINDER | | |

| Nameplate NP3118 | |
|------------------|---------------|
| CAT.NO. | 8250W |
| HP | .75 |
| PHASE | 1 |
| HZ | 60 |
| SER.NO. | |
| SPEC. | G8-167-11 |
| | VOLTS 115/230 |
| | AMPS 4.8/2.4 |
| | RPM 3600 |

| Parts List | | |
|---------------|--|----------|
| Part Number | Description | Quantity |
| SA037653 | SA G8-167-11 | 1.000 EA |
| RA033678 | RA G8-167-11 | 1.000 EA |
| OC3016F12SP | CYL OIL CAP 16MFD/370V | 1.000 EA |
| G8BA3000 | G8 & G10 BASE | 1.000 EA |
| 11XW1032G06 | 10-32 X .38, TAPTITE II, HEX WSHR SLTD U | 1.000 EA |
| HW3001B01 | BRASS CUP WASHER, FOR #10 SCREW | 1.000 EA |
| 19XX2510A14 | 1/4-10 X 7/8 HEX HD PLASTITE SCREW | 4.000 EA |
| HW1000A25 | 1/4 SAE FLAT WASHER (FS) | 4.000 EA |
| HW1003A50 | LOCKWASHER, 1/2", EXT. TOOTH ZINC PLATED | 1.000 EA |
| 51XN1032A04 | 10-32 X 0.25 HX WS SL SR | 2.000 EA |
| XY1032A02 | 10-32 HEX NUT DIRECTIONAL SERRATION | 2.000 EA |
| LD5001A02 | CORD & PLUG ASSY 18-3 SJT .33 DIA. 10 AM | 1.000 EA |
| WD4102A01 | SR-6L-1 HEYCO STRN RELIEF OR 23MPO6L10 M | 1.000 EA |
| G8CB4500A02 | G8-272 BASE COVER, STPD X PLATED | 1.000 EA |
| 51XW0832A07 | 8-32 X .44, TAPTITE II, HEX WSHR SLTD SE | 2.000 EA |
| RM1005A01SP | BUMPER- #2089 (R-R CO) | 4.000 EA |
| 15XF1032A10 | 10-32X5/8 PIN HD PHL TY FSEE JT | 4.000 EA |
| HW5100A06 | W2420-025 WVY WSHR (WB) | 2.000 EA |
| HA1000A34 | DR2463A .02 BRG GUARD B N | 2.000 EA |
| G8EP3900A01SP | ENDPLATE, MACH | 2.000 EA |
| HA3100A14 | THRUBOLT 10-32 X 7.875 | 4.000 EA |
| XY1032A02 | 10-32 HEX NUT DIRECTIONAL SERRATION | 4.000 EA |
| G8FH1802A01SP | GRINDER GUARD - L.H. 8" GRINDER | 1.000 EA |
| 19XW2520A16 | SCREW, 1/4-20X1 TAPTITE-II OR ROLOC 91 | 4.000 EA |

| Parts List (continued) | | |
|------------------------|--|----------|
| Part Number | Description | Quantity |
| G8FH1800A01SP | GRINDER GUARD - R.H. 8" GRINDER | 1.000 EA |
| 19XW2520A16 | SCREW,1/4-20X1 TAPTITE-II OR ROLOC 91 | 4.000 EA |
| HA6099A01SP | 8" GRINDER TOOL REST SUPPORT | 1.000 EA |
| 10XN3816A18 | SCREW, HEX HD, ZINC | 2.000 EA |
| HW1001A38 | LOCKWASHER 3/8, ZINC PLT .688 OD, .382 I | 2.000 EA |
| HW1000A38 | WASHER, 3/8" FLAT, SAE Z/P | 2.000 EA |
| HA6099A01SP | 8" GRINDER TOOL REST SUPPORT | 1.000 EA |
| 10XN3816A18 | SCREW, HEX HD, ZINC | 2.000 EA |
| HW1001A38 | LOCKWASHER 3/8, ZINC PLT .688 OD, .382 I | 2.000 EA |
| HW1000A38 | WASHER, 3/8" FLAT, SAE Z/P | 2.000 EA |
| G8AP1003A01SP | TOOL REST | 1.000 EA |
| 10XN3816A16 | 3/8-16 X 1 HEX HD CAP SCREW | 1.000 EA |
| HW1001A38 | LOCKWASHER 3/8, ZINC PLT .688 OD, .382 I | 1.000 EA |
| HW1000A38 | WASHER, 3/8" FLAT, SAE Z/P | 1.000 EA |
| G8AP1003A01SP | TOOL REST | 1.000 EA |
| 10XN3816A16 | 3/8-16 X 1 HEX HD CAP SCREW | 1.000 EA |
| HW1001A38 | LOCKWASHER 3/8, ZINC PLT .688 OD, .382 I | 1.000 EA |
| HW1000A38 | WASHER, 3/8" FLAT, SAE Z/P | 1.000 EA |
| G6AP1002A01 | SPARK BREAKER-6",7" & 8" GRINDERS | 1.000 EA |
| 10XN3118A12 | 5/16-18 X 3/4 HEX HEAD CAP | 1.000 EA |
| HW1001A31 | LOCKWASHER 5/16, ZINC PLT.591 OD, .319 I | 1.000 EA |
| HW1000A31 | 5/16 SAE FL WSHR NARROW, ID=.344, OD=.62 | 1.000 EA |
| G6AP1002A01 | SPARK BREAKER-6",7" & 8" GRINDERS | 1.000 EA |
| 10XN3118A12 | 5/16-18 X 3/4 HEX HEAD CAP | 1.000 EA |

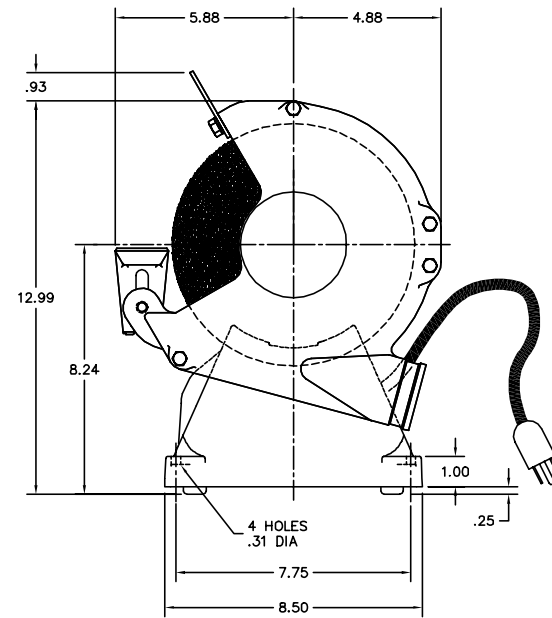
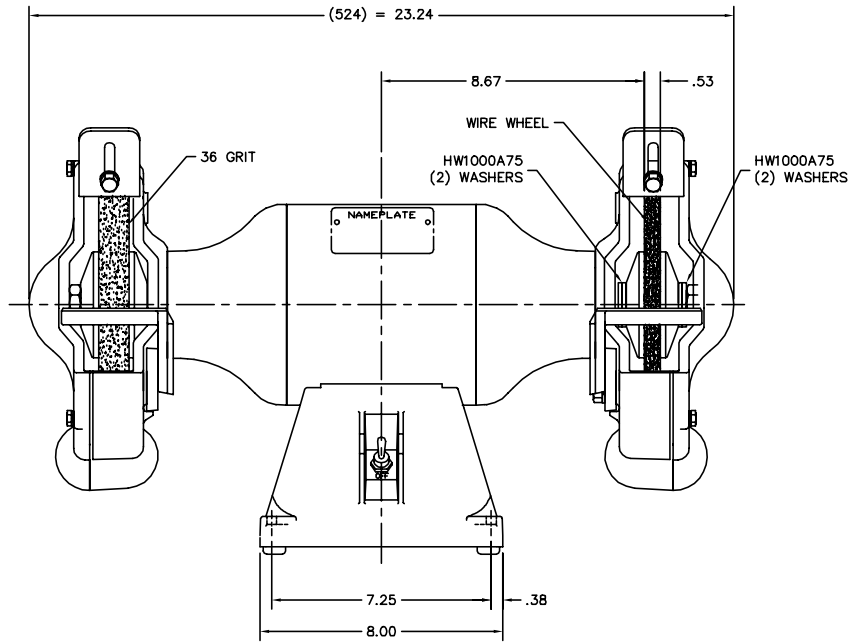
Product Information Packet: 8250W - .75HP,3600RPM,1PH,60HZ,3524C,GRND

| | | |
|---------------|--|----------|
| HW1001A31 | LOCKWASHER 5/16, ZINC PLT.591 OD, .319 I | 1.000 EA |
| HW1000A31 | 5/16 SAE FL WSHR NARROW, ID=.344, OD=.62 | 1.000 EA |
| HA6098 | WHEEL FLANGE, CAST | 4.000 EA |
| HW3020E04 | 1/8 X 3/8 A GROOVE PIN (DRIV-LOCK #118 | 2.000 EA |
| FSG8AP3000A01 | A36N5V10 8X1X3/4 36GRIT X | 1.000 EA |
| G8AP3002 | WHEEL, WIRE BRUSH #W82 | 1.000 EA |
| HW1000A75 | WASHER, 3/4 FLAT, ZN | 4.000 EA |
| XY7510A12SP | 3/4-10 NUT R.H. HEX (NC) ZINC PLATED | 1.000 EA |
| XY7510A62SP | 3/4-10 NUT L.H. HEX (NC) (F/S) | 1.000 EA |
| G8FH1801A01SP | GUARD COVER - R.H. 8" GRINDER | 1.000 EA |
| 10XN2520A16 | 1/4-20 X 1 HEX HEAD CAP SCR, ZINC PLATED | 4.000 EA |
| G8FH1803A01SP | GUARD COVER - L.H. 8" GRINDER | 1.000 EA |
| 10XN2520A16 | 1/4-20 X 1 HEX HEAD CAP SCR, ZINC PLATED | 4.000 EA |
| G7AP5001A01 | EYE SHIELD ASSEM.-7",8",10",12"&14"GRIND | 1.000 EA |
| 85XU0407S04 | 4X1/4 U DRIVE PIN STAINLESS | 2.000 EA |
| SP9000SP | 80600BJ A-H OR 1520237-2 TYCO;2PST,125/2 | 1.000 EA |
| HA6053A01ZP | CLAMP, CAPACITOR 2" DIA, WHITE ZINC PLAT | 1.000 EA |
| MJ1000A02 | GREASE, MOBIL POLYREX EM - 124047 | 0.050 LB |
| MG1000G01 | MUNSELL 5.93PB 3.81/ 2.71 | 0.017 GA |
| LC0279A01 | 1PH, DV, FIX, GRINDER, CONN FOR LV | 1.000 EA |
| MG1500G03-5 | LACQUER PRIMER, GRAY - 5 GAL | 0.010 GA |
| LB1119N | WARNING LABEL | 1.000 EA |
| LB1388A01 | CONSOLIDATED GRINDER LABEL FOR 6", 7", 8 | 1.000 EA |
| NP3118 | ALUM GRINDERS-BUFFERS NO LOGO'S | 1.000 EA |
| G0PA1000 | PKG GRP, PRINT PK1026A06 | 1.000 EA |
| MN907 | INSTR MANUAL GRINDER-BUFFER/WIRE BRUSH | 1.000 EA |

| Accessories | | |
|--------------------|---|-------------------|
| Part Number | Description | Multiplier |
| GA16 | PEDESTAL INDUSTRIAL, CAST IRON 6" - 10" | A8 |
| GA14 | PEDESTAL FABRICATED STEEL W/SHELVES | A8 |
| GA20 | PEDESTAL INDUSTRIAL, CAST IRON 8"-14" | A8 |
| GA20E | PEDESTAL LIGHT INDUSTRIAL,STEEL | A8 |
| GA24 | WATER POT | A8 |
| B80 | 8" 36 GRIT GRINDING WHEEL | A8 |
| B81 | 8" 60 GRIT GRINDING WHEEL | A8 |
| GA9 | PAIR LIGHTED EYESHIELDS | A8 |
| GA9-1 | SINGLE LIGHTED EYESHIELD | A8 |
| GA9S | PAIR EYESHIELDS W/ ON-OFF SWITCH | A8 |
| GA11 | PAIR EYESHIELDS | A8 |
| W82 | 8" WIRE BRUSH WHEEL | A8 |
| DC8 | DUST CONTROL UNIT | A8 |
| BQ1-015-CC | 1PH Brake, NEMA 1,110-125 VAC, 50/60Hz | P1 |
| BQ1-015-CP | 1PH Brake, Panel 110-125 VAC, 50/60 Hz | P1 |
| BQ2-015-CC | 1PH Brake,NEMA 1 208-230 VAC,50/60Hz | E7 |
| BQ2-015-CP | 1PH Brake, Panel 208-230 VAC, 50/60 Hz | E7 |

No performance data has been
assigned to this product.

GBLY0167



CUSTOMER IS RESPONSIBLE FOR DETERMINING THAT MOTOR PERFORMANCE IS SUITABLE IN THE APPLICATION.

| | | | |
|---|---------|------------------------------|-------------|
| REV. DESC: HW1000A75 (4 WASHERS) WAS HA2048A01 (SPACER) | | | |
| REV. LTR: E | BY: M/M | REVISED: 10:16:57 06/21/2001 | TDR: 240016 |
| FILE: AAA00050947 | | REF: GBLY0167 | |
| MTL: - | | | |

BALDOR ELECTRIC Co.

STD 8" GRINDER-BUFFER 524C

GBLY0167

