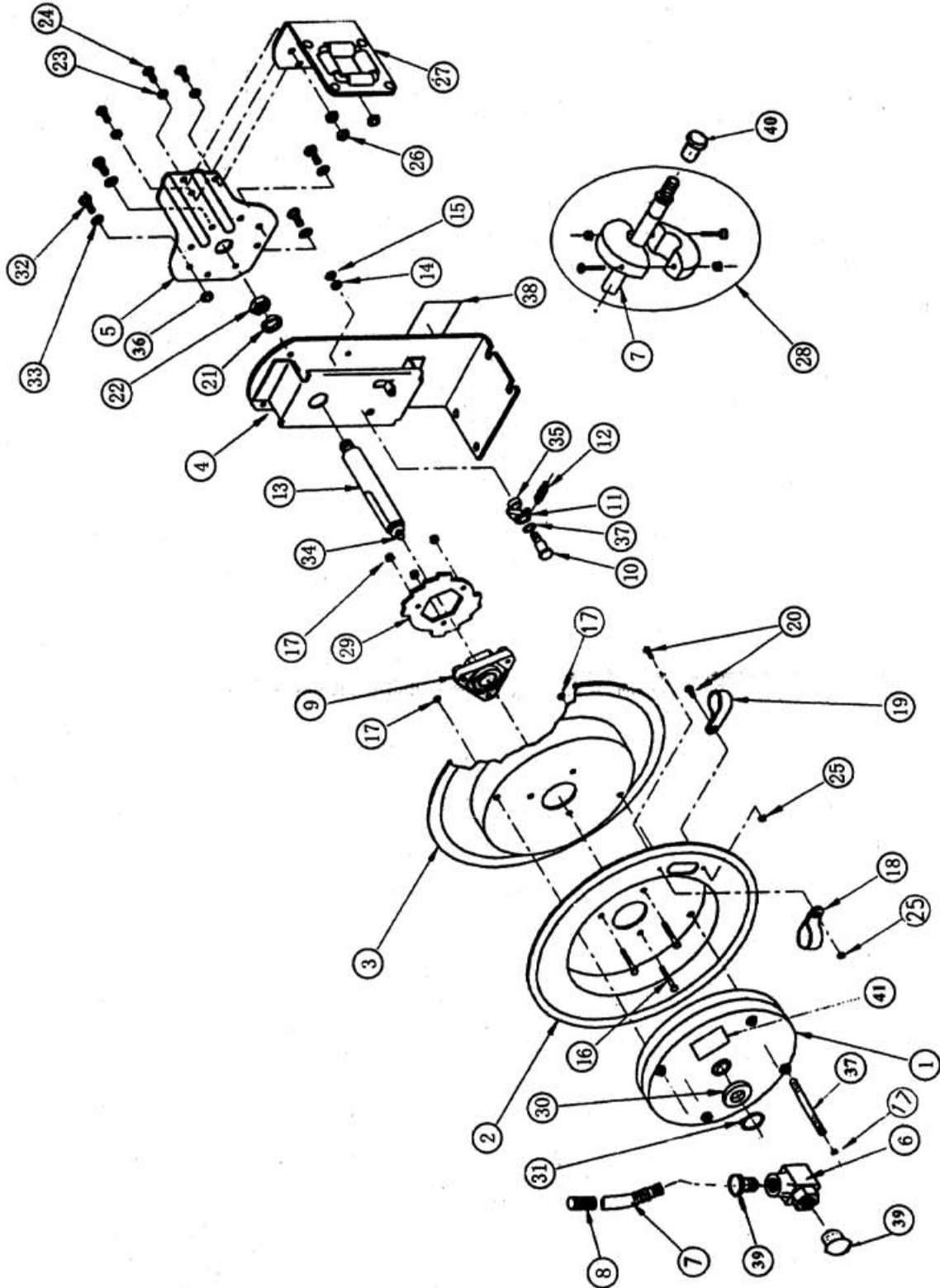


# 3/8' X 50' Hose Reel - Automatic Rewind

**3688  
&  
3689**



## Parts List

| Part No. | Quantity | Description  | Remark                  |
|----------|----------|--|-------------------------|
| 1        | 1        | Spring   |                         |
| 2        | 1        | Drum   |                         |
| 3        | 1        | Drum   |                         |
| 4        | 1        | Base   |                         |
| 5        | 1        | Arm  |                         |
| 6        | 1        | Swivel (including swivel part, rigid part, 2 O-ring and label) |                         |
| 7        | 1        | Hose   | Reel attached with hose |
|          | 0        | Hose   | Reel without hose       |
| 8        | 1        | Guard H  |                         |
| 9        | 1        | Assembly Hub Bearing   |                         |
| 10       | 1        | Bolt   |                         |
| 11       | 1        | Cam, Locking   |                         |
| 12       | 1        | Spring, Dog  |                         |
| 13       | 1        | Axle   |                         |
| 14       | 1        | Washer, Lock   |                         |
| 15       | 1        | Nut, Jam   |                         |
| 16       | 3        | Bolt   |                         |
| 17       | 7        | Nut  |                         |
| 18       | 1        | Clamp  |                         |
| 19       | 1        | Clamp  |                         |
| 20       | 2        | Bolt   |                         |
| 21       | 1        | Washer, Bolt   |                         |
| 22       | 1        | Nut  |                         |
| 23       | 3        | Washer   |                         |
| 24       | 3        | Bolt   |                         |
| 25       | 2        | Nut, Keys  |                         |
| 26       | 3        | Nut, Lock  |                         |
| 27       | 1        | Assembly Roller Bracket  |                         |
| 28       | 1        | Ball stop  |                         |
| 29       | 2        | Locking ring   |                         |
| 30       | 1        | Washer spacer  |                         |
| 31       | 1        | Retaining ring   |                         |
| 32       | 4        | Bolt   |                         |
| 33       | 4        | Washer, Lock   |                         |
| 34       | 1        | Setscrew   |                         |
| 35       | 1        | Washer, Spacer   |                         |
| 36       | 4        | Nut  |                         |
| 37       | 1        | Washer, Spacer   |                         |
| 38       | 1        | Label  |                         |
| 39       | 1        | Cover  |                         |
| 40       | 1        | Cover  | Reel attached with hose |
|          | 2        | Cover  | Reel without hose       |
| 41       | 1        | Label  |                         |