

ALORIS SUPER PRECISION QUICK CHANGE TOOL POSTS

FOR MANUAL AND CNC LATHES

GUARANTEED LASTING REPETITIVE ACCURACY TO WITHIN MILLIONTHS

FEATURES:

- ONLY A SECOND TO CHANGE TOOLS
- RUGGED — NO CHATTER OR VIBRATION
- NO TIME WASTED WITH SHIMS
- UNLIMITED VERSATILITY
- SAFE AND SIMPLE TO OPERATE
- SPEED YOUR LATHE OPERATIONS UP TO 90%
- GUARANTEED*

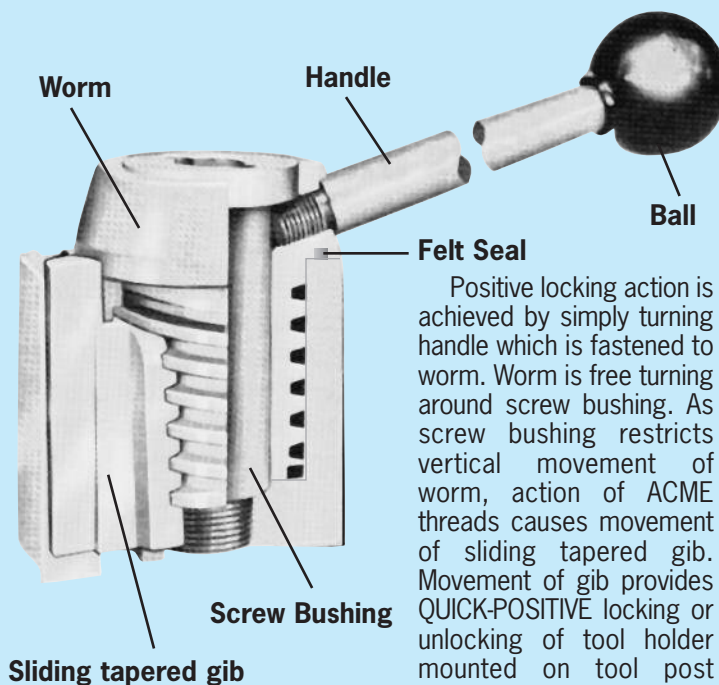


Aloris super precision tool post Patented locking device assembly

The ALORIS Super Precision tool post provides built-in quick tool changing versatility and flexibility combined with wide range, positive control and repetitive accuracy to meet the most exacting working tolerances. Whether for tool room or production work, the Aloris line of tool posts and holders will save set-up time and increase production on all types of lathe operations from fine precision work to heavy duty cutting without chatter or vibration.

Comparison with other tools will highlight Aloris superiority: the quick change tool holder eliminates time consuming set-up — no tool post indexing necessary, no indexing balls, no need for shims, no need to disturb the basic set-up.

This new catalog includes the newest developments produced by Aloris design engineers in their constant search for new and better products that will increase productivity and reduce operating costs of all machine tool operations.



Positive locking action is achieved by simply turning handle which is fastened to worm. Worm is free turning around screw bushing. As screw bushing restricts vertical movement of worm, action of ACME threads causes movement of sliding tapered gib. Movement of gib provides QUICK-POSITIVE locking or unlocking of tool holder mounted on tool post dovetail.

*This guarantee does not include repair or replacement due to misuse, abuse, accidental damage or normal wear.

ALORIS QUICK CHANGE TOOL POSTS

Aloris Miniature (MA) Tool Post

Also on Page 26



Super precision single dovetail tool post designed for jewelers and miniature lathes. Three holders can hold six tools for various operations. Height adjustment is provided for each tool.

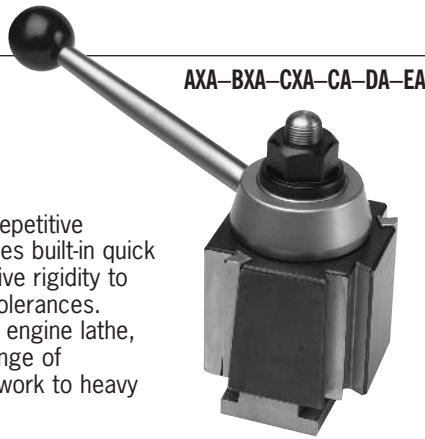
Tool holder capacity: $\frac{1}{8}$ " - $\frac{3}{8}$ ".

Tool post dimensions: $1\frac{1}{2}$ " x $1\frac{1}{2}$ " x $1\frac{1}{4}$ ".
See page 26 for toolholders.

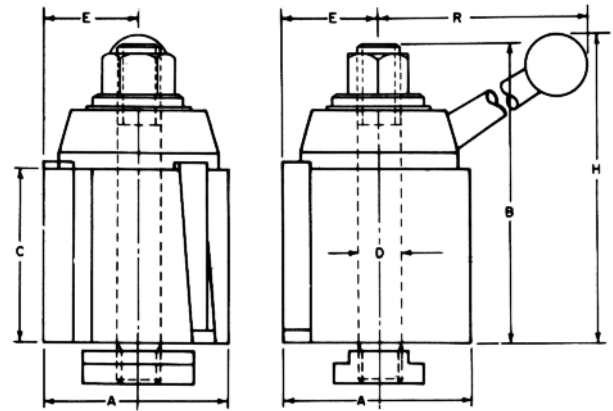
ORDER #: MA

Aloris Super-Precision Tool Post

Precision engineered to assure repetitive accuracy. Advanced design provides built-in quick tool changing versatility with positive rigidity to meet the most exacting working tolerances. Quickly and easily installed on any engine lathe, bench or CNC lathe, for a wide range of operations — from fine precision work to heavy duty cutting.

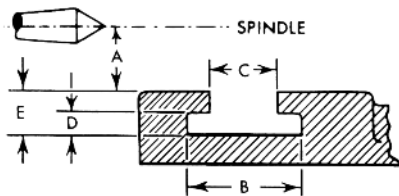


AXA-BXA-CXA-CA-DA-EA



ORDERING INFORMATION

AXA SERIES		BXA SERIES		CXA SERIES		CA SERIES		DA SERIES		EA SERIES																																																																													
ORDER #: AXA		ORDER #: BXA		ORDER #: CXA		ORDER #: CA		ORDER #: DA		ORDER #: EA																																																																													
DIMENSIONS		DIMENSIONS		DIMENSIONS		DIMENSIONS		DIMENSIONS		DIMENSIONS																																																																													
A	B	C	D	E	H	R	SWING UP TO	A	B	C	D	E	H	R	SWING UP TO	A	B	C	D	E	H	R	SWING UP TO	A	B	C	D	E	H	R	SWING UP TO	A	B	C	D	E	H	R	SWING UP TO	A	B	C	D	E	H	R	SWING UP TO	A	B	C	D	E	H	R	SWING UP TO																																
2½	3¾	2¼	¾	1¾	4¼	5¾	10"	3	4¾	2¾	¾	1¾	5¾	7¾	12-15"	3½	5¾	3	¾	1¾	6¾	7¾	13-18"	4	6¾	3¾	¾	2¾	7	9	14-20"	5	7¾	4¾	1"	2¼	8¾	10¾	17-48"	6	8¾	5	1¼	3¾	10	13¾																																									



MAKE OF LATHE	SWING	A	B	C	D	E

*To order tool holders see page 4 thru 25. *To order sets see pages 26 and 27.

*All Aloris Super Precision Quick Change Tool Posts are furnished with a BLANK T-Nut. Aloris can machine the T-Nut at **NO ADDITIONAL CHARGE** if "dimensions" are provided at time of purchase, otherwise the T-Nut will ship blank.

Please fill out chart and fax to 973-772-8606. (Please reference your Purchase Order on your T-Nut ordering sheet.)

POSTS: REPLACEMENT PARTS

Not Interchangeable with Indexable Tool Post Parts.


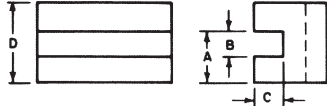

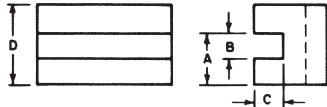

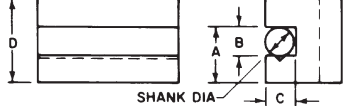

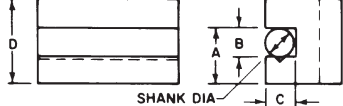

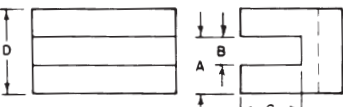

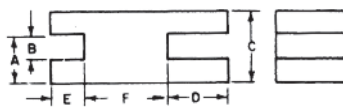

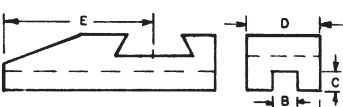

"T" BOLTS						
ORDER #	AXA-TB*	BXA-TB*	CXA-TB*	CA-TB*	DA-TB*	EA-TB*

BALLS						
ORDER #	AXA-BALL*	BXA-BALL*	CXA-BALL*	CA-BALL*	DA-BALL*	EA-BALL*

HANDLES						
ORDER #	AXA-HDL*	BXA-HDL*	CXA-HDL*	CA-HDL*	DA-HDL*	EA-HDL*

FLANGE NUTS						
ORDER #	AXA-FN*	BXA-FN*	CXA-FN*	CA-FN*	DA-FN*	EA-FN*

QUICK CHANGE SHANK TOOL HOLDERS

					AXA SERIES					
#1		TURNING AND FACING HOLDER Takes various sizes of bits. Turning and facing tools can be locked in together. Saves time and labor when changing operations.		ORDER # AXA-1						
				A	B	C	D	Tool Bit		
				$1\frac{5}{16}$	$\frac{1}{2}$	$\frac{7}{16}$	$1\frac{1}{2}$	$\frac{3}{16}-\frac{1}{2}$		
#1S		OVERSIZE TURNING AND FACING HOLDER Takes large sizes of bits. Turning and facing tools can be locked in together. Saves time and labor when changing operations. B dimension is oversize which allows larger tools to be used.		ORDER # AXA-1S						
				A	B	C	D	Tool Bit		
				1"	$\frac{5}{8}$	$\frac{7}{16}$	$1\frac{1}{2}$	$\frac{5}{8}$ max		
#2		BORING, TURNING AND FACING HOLDER "V" groove holds round shank boring bars and tools as well as square tool bits.		ORDER # AXA-2						
				A	B	C	D	Tool Bit	Shank	
				$1\frac{5}{16}$	$\frac{1}{2}$	$\frac{7}{16}$	$1\frac{1}{2}$	$\frac{3}{16}-\frac{1}{2}$	$\frac{7}{16}$	
#2S		OVERSIZE BORING, TURNING AND FACING HOLDER "V" groove holds round shank boring bars and tools as well as square tool bits. B dimension is oversize which allows larger tools to be used.		ORDER # AXA-2S						
				A	B	C	D	Tool Bit	Shank	
				1"	$\frac{5}{8}$	$\frac{7}{16}$	$1\frac{1}{2}$	$\frac{5}{8}$ max	$\frac{1}{2}$	
#6		MULTIPLE TOOL HOLDER Versatile, ideal for repetitive work: for gang set-ups or form tool.		ORDER # AXA-6						
				A	B	C	D	Tool Bit		
				1"	$\frac{1}{2}$	$1\frac{1}{8}$	$1\frac{9}{16}$	$\frac{1}{4}-\frac{1}{2}$		
#9		MULTI-PURPOSE HOLDER Ideal for multiple operations. Left or right turning and facing, working close to tail stock, form tool gang set-ups, etc. Extremely useful for short heavy duty boring or CNC gang tooling.		ORDER # AXA-9 SPECIAL ORDER						
				A	B	C	D	E	F	Tool Bit
				$1\frac{5}{16}$	$\frac{3}{8}$	$1\frac{1}{2}$	$1\frac{7}{8}$	1"	$2\frac{1}{8}$	$\frac{3}{16}-\frac{3}{8}$
#13 #13L		EXTENSION TOOL HOLDER #13 & 13L A new addition to the versatile Aloris dovetail mounted quick-change tool holder series. The #13 provides an extremely rugged extended open slot featuring maximum rigidity for deep turning or facing operation. 13L – opposite hand.		ORDER # AXA-13	ORDER # AXA-13L					
				A	B	C	D	E	Tool Bit	
				$1\frac{5}{16}$	$\frac{1}{2}$	$\frac{7}{16}$	$1\frac{1}{2}$	$2\frac{1}{2}$	$\frac{3}{16}-\frac{1}{2}$	
HEIGHT ADJUSTMENT ASSEMBLY				ORDER # AXA-HA*						
TOOL HOLDER SET SCREWS (SET OF 4)			ORDER # AXA-SS*							



BXA SERIES						CXA SERIES						CA SERIES						DA SERIES						EA SERIES											
ORDER # BXA-1						ORDER # CXA-1						ORDER # CA-1						ORDER # DA-1						ORDER # EA-1											
A	B	C	D	Tool Bit		A	B	C	D	Tool Bit		A	B	C	D	Tool Bit		A	B	C	D	Tool Bit		A	B	C	D	Tool Bit							
1 ¹ / ₈	⁵ / ₈	¹ / ₂	1 ³ / ₄	1/4– ⁵ / ₈		1 ⁷ / ₁₆	³ / ₄	⁵ / ₈	2 ¹ / ₈	1/2– ³ / ₄		1 ¹¹ / ₁₆	1"	³ / ₄	2 ¹ / ₂	1/2–1"		2 ³ / ₁₆	1 ¹ / ₄	1"	3 ¹ / ₈	1/2–1 ¹ / ₄		2 ¹¹ / ₁₆	1 ¹ / ₂	1 ¹ / ₄	4"	3/4–1 ¹ / ₂							
ORDER # BXA-1S						ORDER # CXA-1S						ORDER # CA-1S						ORDER # DA-1S																	
A	B	C	D	Tool Bit		A	B	C	D	Tool Bit		A	B	C	D	Tool Bit		A	B	C	D	Tool Bit													
1 ³ / ₁₆	³ / ₄	¹ / ₂	1 ³ / ₄	3/4 max		1 ⁹ / ₁₆	1"	⁵ / ₈	2 ¹ / ₈	1" max		2"	1 ¹ / ₄	³ / ₄	2 ¹ / ₂	1 ¹ / ₄ max		2 ⁵ / ₁₆	1 ¹ / ₂	1"	3 ¹ / ₈	1 ¹ / ₂ max													
ORDER # BXA-2						ORDER # CXA-2						ORDER # CA-2						ORDER # DA-2						ORDER # EA-2											
A	B	C	D	Tool Bit	Shank	A	B	C	D	Tool Bit	Shank	A	B	C	D	Tool Bit	Shank	A	B	C	D	Tool Bit	Shank	A	B	C	D	Tool Bit	Shank	A	B	C	D	Tool Bit	Shank
1 ¹ / ₈	⁵ / ₈	¹ / ₂	1 ³ / ₄	1/4– ⁵ / ₈	¹ / ₂	1 ⁷ / ₁₆	³ / ₄	⁵ / ₈	2 ¹ / ₈	1/2– ³ / ₄	³ / ₄	1 ¹¹ / ₁₆	1"	³ / ₄	2 ¹ / ₂	1/2–1"	¹³ / ₁₆	2 ³ / ₁₆	1 ¹ / ₄	1"	3 ¹ / ₈	1/2–1 ¹ / ₄	1"	2 ¹¹ / ₁₆	1 ¹ / ₂	1 ¹ / ₄	4"	3/4–1 ¹ / ₂	1 ¹ / ₄						
ORDER # BXA-2S						ORDER # CXA-2S						ORDER # CA-2S						ORDER # DA-2S																	
A	B	C	D	Tool Bit	Shank	A	B	C	D	Tool Bit	Shank	A	B	C	D	Tool Bit	Shank	A	B	C	D	Tool Bit	Shank												
1 ³ / ₁₆	³ / ₄	¹ / ₂	1 ³ / ₄	3/4 max	⁵ / ₈	1 ⁹ / ₁₆	1"	⁵ / ₈	2 ¹ / ₈	1" max	³ / ₄	2"	1 ¹ / ₄	³ / ₄	2 ¹ / ₂	1 ¹ / ₄ max	1"	2 ⁷ / ₁₆	1 ¹ / ₂	1"	3 ¹ / ₈	1 ¹ / ₂ max	1 ¹ / ₄												
ORDER # BXA-6						ORDER # CXA-6						ORDER # CA-6						ORDER # DA-6						ORDER # EA-6											
A	B	C	D	Tool Bit		A	B	C	D	Tool Bit		A	B	C	D	Tool Bit		A	B	C	D	Tool Bit		A	B	C	D	Tool Bit							
1 ¹ / ₁₆	¹ / ₂	1 ⁹ / ₁₆	1 ³ / ₄	1/4– ¹ / ₂		1 ⁵ / ₁₆	⁵ / ₈	1 ⁷ / ₁₆	2 ¹ / ₈	3/8– ⁵ / ₈		1 ⁹ / ₁₆	³ / ₄	1 ⁷ / ₈	2 ¹ / ₂	1/2– ³ / ₄		2 ¹ / ₈	1"	2 ¹ / ₈	3 ¹ / ₄	1/2–1"		2 ⁵ / ₈	1 ¹ / ₄	2 ⁵ / ₈	4"	3/4–1 ¹ / ₂							
ORDER # BXA-9 SPECIAL ORDER						ORDER # CXA-9 SPECIAL ORDER						ORDER # CA-9 SPECIAL ORDER						ORDER # DA-9 SPECIAL ORDER																	
A	B	C	D	E	F	Tool Bit	A	B	C	D	E	F	Tool Bit	A	B	C	D	E	F	Tool Bit	A	B	C	D	E	F	Tool Bit								
1 ¹ / ₈	¹ / ₂	1 ³ / ₄	2 ¹¹ / ₁₆	1 ³ / ₁₆	2 ⁵ / ₈	1/4– ¹ / ₂	1 ⁵ / ₁₆	⁵ / ₈	2"	3"	1 ⁵ / ₈	3 ³ / ₈	3/8– ⁵ / ₈	1 ¹ / ₂	³ / ₄	2 ¹ / ₂	3 ³ / ₈	1 ³ / ₄	3 ⁷ / ₈	3/8– ³ / ₄	2"	1"	3"	4"	2 ¹ / ₈	4 ⁷ / ₈	1/2–1"								
ORDER # BXA-13			ORDER # BXA-13L			ORDER # CXA-13			ORDER # CXA-13L			ORDER # CA-13			ORDER # CA-13L			ORDER # DA-13			ORDER # DA-13L			ORDER # EA-13			ORDER # EA-13L								
A	B	C	D	E	Tool Bit		A	B	C	D	E	Tool Bit		A	B	C	D	E	Tool Bit		A	B	C	D	E	Tool Bit		A	B	C	D	E	Tool Bit		
1 ¹ / ₈	⁵ / ₈	¹ / ₂	1 ³ / ₄	2 ¹ / ₄	1/4– ⁵ / ₈		1 ⁷ / ₁₆	³ / ₄	⁵ / ₈	2 ¹ / ₈	3 ³ / ₈	1/2– ³ / ₄		1 ¹¹ / ₁₆	1"	³ / ₄	2 ¹ / ₂	3 ³ / ₄	1/2–1"		2 ¹ / ₈	1 ¹ / ₄	1"	3 ¹ / ₈	5"	1/2–1 ¹ / ₄		2 ¹¹ / ₁₆	1 ¹ / ₂	1 ¹ / ₄	4"	6 ¹ / ₂	3/4–1 ¹ / ₂		
ORDER # BXA-HA*						ORDER # CXA-HA*						ORDER # CA-HA*						ORDER # DA-HA*						ORDER # EA-HA*											
ORDER # BXA-SS*						ORDER # CXA-SS*						ORDER # CA-SS*						ORDER # DA-SS*						ORDER # EA-SS*											