



3204



Standard accessories



1 Set of hard solid ID jaws



1 Set of hard solid OD jaws

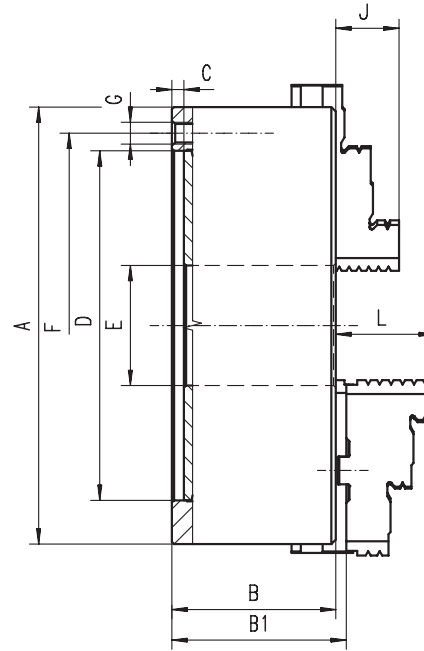


1 Wrench + 1 Hex key

Spare parts 99-141

Technical data 142-148

Code No.	Type
7-810-0300	3204-3"
7-810-0400	3204-4"
7-810-0500	3204-5"
7-810-0600	3204-6"
7-810-0800	3204-8"
7-810-1000	3204-10"
7-810-1200	3204-12"
7-810-1600	3204-16"
7-810-2000	3204-20"
7-810-2500	3204-25"



■ Ground working surfaces

A [in]	B [in]	B1 [in]	C [in]	D H7 [in]	E [in]	F [in]	G	J [in]	L [in]	Weight [lbs]
3.15	1.73	-	0.12	2.20	0.63	2.64	3xM6	0.51	-	3.31
3.94	1.97	-	0.12	2.76	0.79	3.27	3xM8	0.63	-	6.17
4.92	2.20	2.39	0.16	3.74	1.26	4.25	3xM8	0.79	1.57	11.02
6.30	2.54	2.73	0.16	4.92	1.65	5.51	6xM10	1.26	1.69	22.05
7.87	2.95	3.14	0.16	6.30	2.17	6.93	6xM10	1.14	1.77	38.58
9.84	3.35	3.50	0.20	7.87	2.99	8.82	6xM12	1.34	2.09	63.93
12.40	3.70	3.90	0.20	10.24	4.06	11.26	6xM16	1.69	2.24	110.23
15.75	4.13	4.48	0.20	12.99	5.35	14.25	6xM16	2.17	2.64	187.39
19.69	4.72	5.15	0.20	16.54	7.48	18.03	6xM16	2.36	3.11	319.67
24.80	5.31	5.76	0.28	21.46	9.92	23.07	6xM16	2.76	3.43	551.16

Larger diameters available on page 82-93!

3205



Standard accessories



1 Set of hard top jaws



1 Set of hard master jaws



1 Wrench + 1 Hex key

Spare parts 99-141

Technical data 142-148

Type	Code No.
-	-
-	-
3205-5"	7-800-0500
3205-6"	7-800-0600
3205-8"	7-800-0800
3205-10"	7-800-1000
3205-12"	7-800-1200
3205-16"	7-800-1600
3205-20"	7-800-2000
3205-25"	7-800-2500