

Prismatic-column Optional Equipment

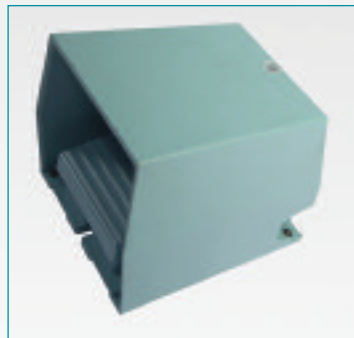
Model	Description:
7044	Coolant System with separate tank (all models)
7022	Worklight with magnetic base (all models)
PST	Cycle or spindle turn START foot pedal
PSR	Spindle reverse foot pedal (for tapping)
MH-4	Cross Slide Table 27.56" x 14.17" (BP-40, BP-50, BP-70)

Series F

AR-F	50% lower feed rate range
LDG-F	Digital read-out system (2-axis), for MH-4 cross table
SERVOX-F	Servo feed X axis
SERVOY-F	Servo feed Y axis
TCR-F	Quick tool change nut for ISO-30

Series P

RPF-P	Automatic pitch controlled tapping with single speed brake-motor
RPF-ANR-P	Automatic pitch controlled tapping with pneumatic rapid approach
HGP-P	Master guide spindle and nut set for automatic pitch controlled tapping
ACNL-P	Pneumatic counterbalance with rapid approach and retreat
ACNL-S-P	Pneumatic counterbalance with rapid approach and retreat for tube and profile drilling
ACNL-RPF-P	Pneumatic counterbalance with rapid approach and retract with pitch control tapping
AR-P	50% lower feed rate range
DLM-P	Mechanical spotface device
CN-P	Pneumatic counterbalance for spindle return
UN-P	Union, dragging cone and assembly for multi-spindle head
GM-P	Multi-spindle head guide rod
PM-P	Start-stop and emergency stop pendant control
PMC-P	Pendant control panel
ISO 40 P	ISO-40 spindle with quick change nut (BP40, BP50, BP70)
ISO 50 P	ISO-50 spindle with quick change nut (BP70)



PST

Cycle or spindle turn START foot pedal

PSR

Spindle reverse foot pedal (for tapping)



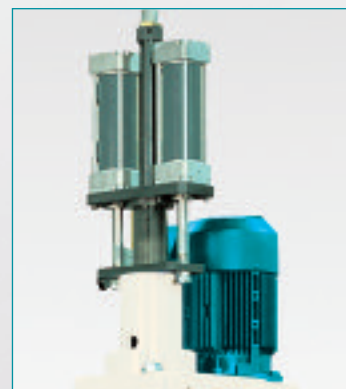
RS

Automatic feed reversing system for tapping (standard on Series F/P -RS models)



RPF

Automatic pitch controlled tapping with single speed brake-motor. (for Series P models)



RPF-ANR

Automatic pitch controlled tapping with pneumatic rapid approach. (for Series P models)



SERVO X SERVO Y

Electronic "SERVO" feed unit for X/Y axes.
Feed range: .79 to 39.37 in/min
Rapid feed: 39.37 in/min
Available for MH-4 cross table



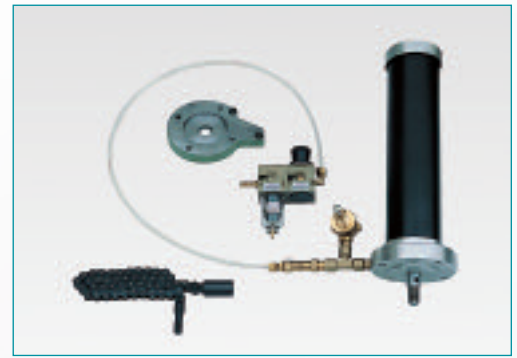
ACNL
Pneumatic counterbalance for automatic drilling cycle with rapid approach, working feed and rapid retreat.
(for Series **B** models)

ACNL-S
Pneumatic counterbalance for automatic drilling cycle with two rapid approaches, and rapid retreat, for tube and profile drilling.
(for Series **B** models)

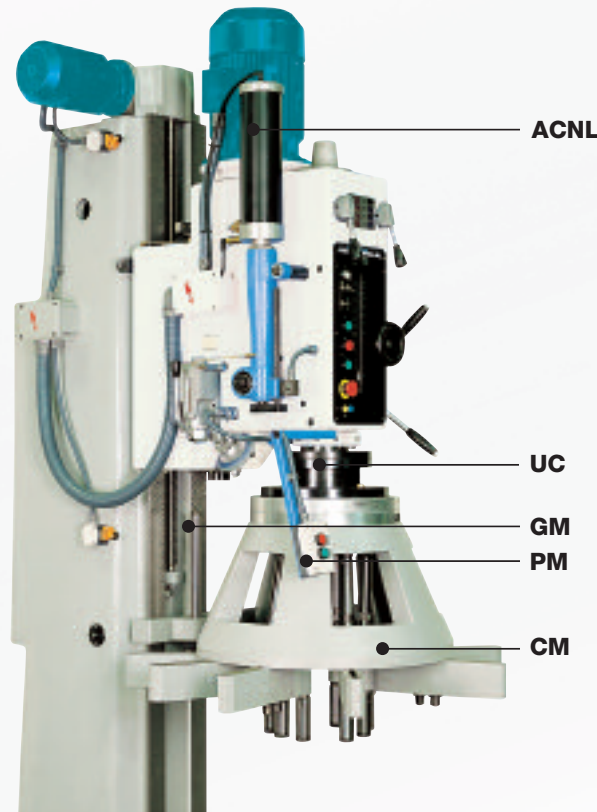


LDG
Digital read-out system.
Available for MH-3 and MH-4 cross table

CN
Pneumatic counterbalance for spindle return, recommended for multi-spindle head applications.
(for Series **P** models)



Assembly for Multi-Spindle Heads



ACNL
Automatic drilling cycle with rapid approach, working feed and rapid retract, with additional pneumatic counterweight function for the multi-spindle head.

UC
Union, dragging cone and assembly of the multi-spindle head.

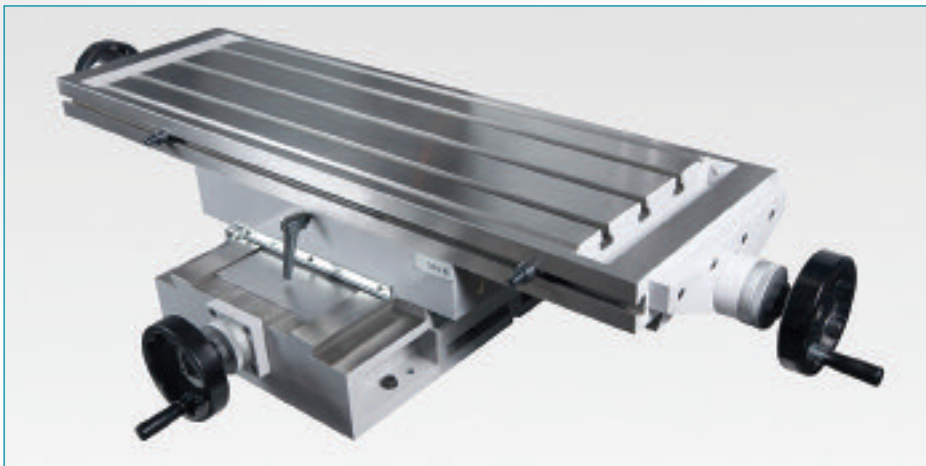
CM
Multi-spindle head with fixed or adjustable spindle.

GM
Multi-spindle head guide rod.

PM
START/STOP and emergency STOP control extension.

Cross Slide Tables

Series P for models BP-40, BP-50, BP-70



MH-4 Cross Slide Table
X Travel = 27.56"
Y Travel = 14.17"
Table net weight 661 lbs.