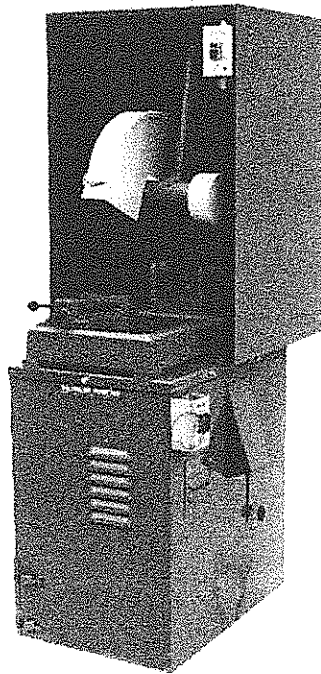


INSTRUCTION MANUAL

K12-14V



**KALAMAZOO
INDUSTRIES, INC.**

6856 East K Avenue
Kalamazoo, MI 49048

269-382-2050 PH

269-382-0790 FAX

www.kalamazooindustries.com

WARNING!

TO REDUCE THE RISK OF FIRE OR SHOCK HAZARD,
DO NOT EXPOSE THIS EQUIPMENT TO RAIN, ANY LIQUID OR MOISTURE.

READ AND UNDERSTAND ALL SAFETY PRECAUTIONS AND OPERATING INSTRUCTIONS BEFORE OPERATING UNIT

OPERATING INSTRUCTIONS

INSPECT YOUR NEW UNIT CAREFULLY FOR SIGNS OF SHIPPING DAMAGE. IF DAMAGED, PLEASE CONTACT CARRIER AND SUBMIT A CONCEALED DAMAGED REPORT. DO NOT RETURN GOODS TO US WITHOUT OUR RGA NUMBER AND SHIPPING INSTRUCTIONS. SEE BACK PAGE FOR RETURN POLICY AND WARRANTY.

BEFORE STARTING OR CONNECTING ELECTRICALS VERIFY THE PHASE AND VOLTAGE OF THE UNIT.

BE SURE MACHINE IS BALANCED CORRECTLY SO IT WILL NOT TIP OVER.

TO GUARD AGAINST CONCEALED DAMAGE, STAND CLEAR AND OBSERVE UNIT FOR THE FIRST FEW MINUTES OF OPERATION. GUARDS MUST NEVER BE REMOVED.

ABRASIVE SAW SAFETY

NEVER REMOVE SAFETY GUARDS FROM MACHINE. DISCONNECT POWER SOURCE BEFORE MAKING ANY MACHINE ADJUSTMENTS.

ELECTRIC MACHINES ARE NOT INTENDED FOR USE IN OR NEAR WATER. THIS INCLUDES AN OPERATOR STANDING ON A WET FLOOR.

DO NOT USE AROUND FLAMMABLE MATERIALS OR LIQUIDS.

MACHINES SHOULD BE OPERATED IN VENTILATED AREAS.

ALWAYS WEAR SAFETY GLASSES OR A FULL FACE SHIELD FOR PROTECTION.

KEEP HANDS CLEAR OF THE CUTTING AREA.

DO NOT WEAR GLOVES OR LOOSE FITTING CLOTHES WHEN OPERATING THIS MACHINE.

ALWAYS KEEP HAIR TIED BACK OR COVERED.

ALWAYS KEEP FLANGES CLEAN AND TIGHT AGAINST CUTTING WHEEL.

ABRASIVE MACHINES ARE FOR ABRASIVE WHEELS NOT STEEL TOOTHED BLADES. DO NOT ATTEMPT TO USE STEEL BLADES UNLESS CORRECTLY GUARDED WITH AN ENCLOSED WHEEL GUARD. KEEP STEEL BLADES FULLY RETRACTED INTO WHEEL GUARD WHEN DONE CUTTING.

ALWAYS KEEP WHEEL GUARD IN DOWN POSITION.

BE SURE WORK PIECE IS CLAMPED SECURELY IN VISE BEFORE CUTTING.

WARNING!!!

IMPROPER USE MAY CAUSE BREAKAGE AND SERIOUS INJURY.

DO

DO always handle and store wheels in a careful manner.
DO visually inspect all wheels before mounting for possible damage.
DO check machine speed against the established maximum safe operating speed marked on the wheel.
DO check mounting flanges for equal and correct diameter.
DO use mounting blotters when supplied with wheels.
DO always use a safety guard covering at least one-half of the abrasive wheel.
DO allow newly mounted wheels to run at operating speed, with guard in place, for at least one minute before cutting.
DO always wear safety glasses or some type of eye protection when cutting.

DON'T

1. DON'T use a cracked wheel or one that has been dropped or has become damaged.
2. DON'T force a wheel onto the machine or alter the size of the mounting hole-if wheel won't fit the machine, get one that will.
3. DON'T ever exceed maximum operating speed established for the wheel.
4. DON'T use mounting flanges on which the bearing surfaces are not clean, flat and free of burrs.
5. DON'T tighten the mounting nut excessively.
6. DON'T start the machine until the wheel guard is in place.
7. DON'T jam work into wheel.
8. DON'T force cutting so that motor slows noticeably or work gets hot.
9. DON'T wear gloves when operating machine.

K12-14V

5 hp, 1ph/3ph

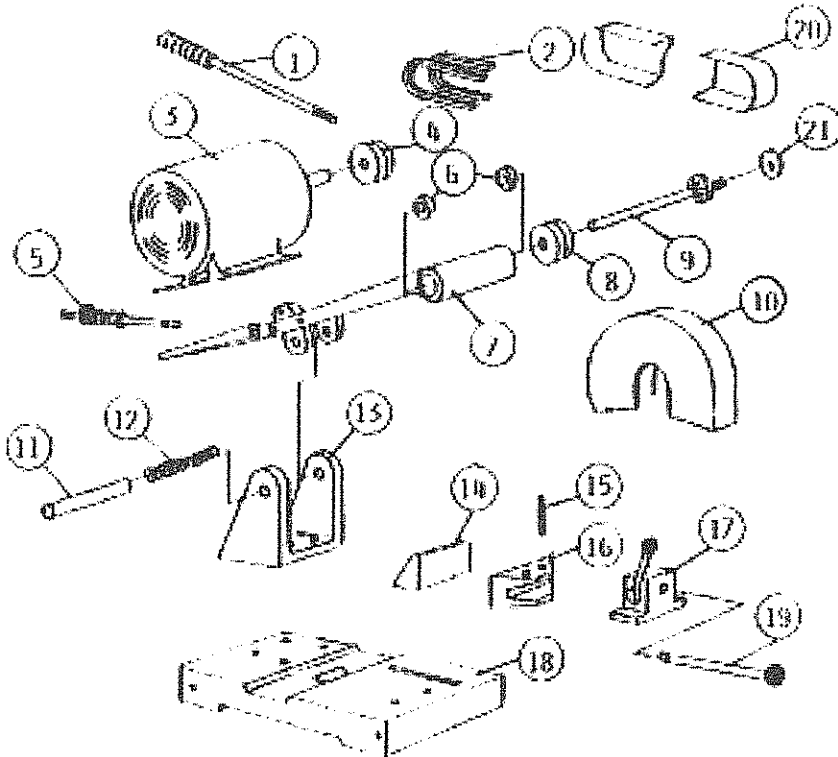
1" arbor, LH thd.

Dust collector base DCV-6

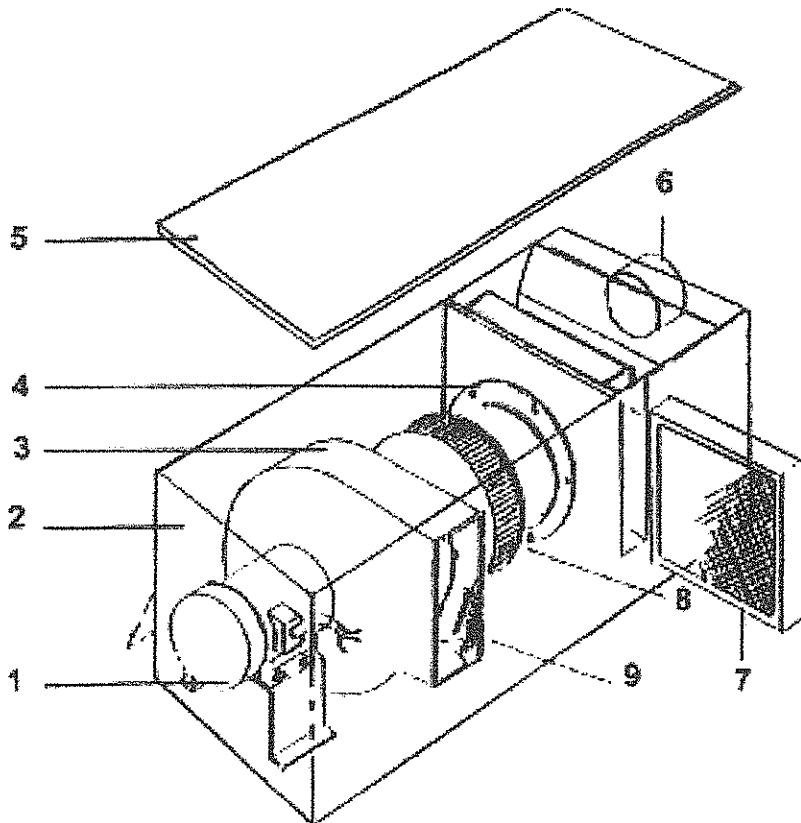
Basic Operation/ Installation

1. Before installation be sure of machine voltage and phase. Machines are pre-wired to customer specifications before shipment. Voltage changes require re-wiring of motor leads. If not familiar with electrics consult an electrician.
2. Hold workpiece securely in vise. Do not allow workpiece movement during cutting. Workpiece movement results in broken wheels.
3. Abrasive wheels – Wheels vary in grit, bond, wet, dry, etc.. Not all abrasive wheels are created equal. Choose the correct wheel for the material being cut. Consult your dealer for the proper abrasive wheel for the job. Good cuts are not black/blue/green but brite like the OD of the material. Try another wheel grade to get good cuts. When you find the wheel that works the best stay with that grade.
4. Position the workpiece slightly ahead of wheel center. (towards operator). The back fence is positioned slightly behind wheel center to handle large parts. Small parts positioned too far behind wheel center will cause wheel bounce. Position a shim of some material at the fence first , then clamp your part to bring it out towards the operator to eliminate bouncing of the wheel. Pull on the saw handle hard enough to cause the wheel to “breakdown” or cut .
5. The dust collector uses a panel type filter element. The filter is accessed thru a flap door on the side of the unit. (item #7,DCV-6). The filter element is designed for approximately 50 micron. Finer materials like graphite will not be caught and will bypass thru the element. The unit is not designed for graphite. Remove the filter element as needed and clean it . Re-place as needed.
6. Safety- Follow all safety procedures. Wear safety glasses at all times. DO NOT wear gloves, long hair, loose clothing that can get caught in the V belts and wheel. Abrasive saws are designed for abrasive wheels NOT steel carbide tipped blades. Full OSHA clam guards are required for steel blades.
7. Maintenance- Keep V belts tight with ½” of “ squeeze”. Keep machine clean.

Model K12-14V Parts



	PART NO.	DESCRIPTION
1	381-002	HANDLE W/GRIP
2	051-006	V-BELT 3V375 (2)
3		SHP MOTOR
4	560-002	MOTOR PULLEY
5	645-004	STOP ASSEMBLY
6	044-001	K12 BEARING (2)
7	002-002	SAW ARM
8	560-001	SPINDLE PULLEY
9	701-002	SPINDLE W/FLANGE
10	342-003	12" WHEEL GUARD
	342-025	14" WHEEL GUARD
11	562-003	TRUNNION PIN
12	697-018	TRUNNION SPRING
13	041-003	TRUNNION
14	431-002	REAR VISE JAW
15	562-001	VISE JAW PIN
16	431-001	FRONT VISE JAW
17	386-001	VISE HOUSING ASSY
18	050-002	SAW BASE
19	645-001	VISE ROD W/KNOB
20	342-004	BELT GUARD
21	292-004	LOOSE FLANGE
	912-015	VISE ASSY/LESS JAW



MODEL DCV-6 DUST COLLECTOR

ITEM	PART NO	DESCRIPTION
1	488-002	1HP, 1PH MOTOR, CL3508
	488-004	1HP, 3PH MOTOR, CM3546
2	124-005	CABINET
3	386-026	HOUSING, FAN
4	004-005	INLET CONE
5	124-006	CABINET COVER
6		4" INLET
7	294-003	FILTER
8		EXHAUST OUTLET
9	296-001	FAN, SQUIRREL CAGE

KALAMAZOO INDUSTRIES, INC.
 6856 EAST K AVENUE
 KALAMAZOO, MI 49048-6042
 269-382-2050 PHONE
 269-382-0790 FAX