

The ORIGINAL just got better!

# SKIMERATOR®

NO FILTERS ~ NO CONSUMABLES ~ GREEN and SIMPLE!

Made in the U.S.A.

## Electric Pump Systems

**Shallow Draft with Electric Pump**  
Designed for coolant level that fluctuates up to 3". Model no. 3200

**Deep Draft with Electric Pump**  
Designed for coolant level that fluctuates up to 5". Model no. 3200D

## Air Pump Systems

**Low Temp Shallow Draft**  
Designed to service machines with a sump depth of 5-7". Model no. 3200AP

## Portable Systems

**Stand with Wheels**  
Easy to move stand with holes for air pump mounting. Part no. 5040

## Floating Head Systems

*\*For use in sumps where the coolant level fluctuates above standard skimerator box (<5").\**

**Shallow Draft Floating Head with 115v Electric Pump**  
For environments up to 120 degrees F. Model no. 3200F

**Shallow Draft Extreme Duty Floating Head**  
Stainless Steel Floating Head System for use in environments up to 110-175 degree F. Model 3717F-CPF

**Shallow Draft Floating Head with High Temp. Air Pump**  
For environments up to 180 degrees F. Model no. 3717F

With no filters or consumables, the SKIMERATOR skims contaminating "tramp" oils and aerates coolant so your machine can perform at peak efficiency while extending coolant life - saving you time and money!



Manufactured in the U.S.A. by:

**WAYNE**  
PRODUCTS



The ORIGINAL just got better!

# SKIMERATOR®

NO FILTERS ~ NO CONSUMABLES ~ GREEN and SIMPLE!



Manufactured in the U.S.A. by:

**WAYNE**  
PRODUCTS



### SKIMERATOR MODELS

Skimerator Models	3200	3200D	3200F	3200AP	3717F	3717F-CPF
Hardware - 4485	x	x	x	x	x	x
Tank - 6617	x	x	x	x	x	x
PIB (User Manual) - 3241	x	x				x
PIB (User Manual) - 6540					x	x
Pump - 3262	x	x	x			
Post - 3248	x	x		x		
Foot Weldment - 3246	x	x		x		
Shallow Box - 4428	x		x	x	x	x
Deep Box - 4429		x				
Float Kit - 6682			x			
Float Kit - 6682 XD					x	
Float Kit - 6682 CPF						x
1/4" male adapter - 5453				x	x	x
Reducer - 5508				x	x	x
Air-Pump Normal Temp - 5413				x		
Air-Pump with Teflon - 6744					x	x
12" Stand - 4599						
12" Stand with Wheels - 5040						

Optional



The ORIGINAL just got better!

# SKIMERATOR®

NO FILTERS ~ NO CONSUMABLES ~ GREEN and SIMPLE!

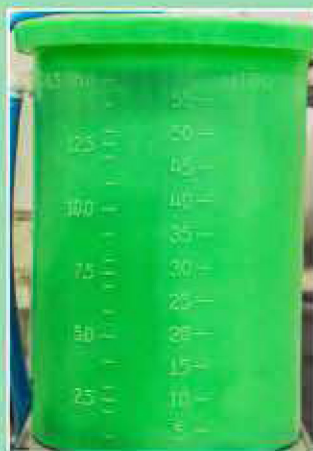
Made in the U.S.A.  
Now Part of the Mini-Skimmer™ Family!

## What it does

### Low Cost ~ Low Environmental Impact!

- Skims contaminating "tramp" oils from coolant surface so your machines can perform at peak efficiency.
- 2-Stage Aeration action reduces bacteria growth and rancidity for a healthier, better smell.
- Extends coolant life by 50% thus reducing cost and environmental impact - Saving "Green" while being Green!
- The translucent tank with easy to read measuring lines, further inhibits bacteria growth and allows for skimmed oil level monitoring.
- Available in Shallow or Deep Draft Models (3200 or 3200D)
- Models 3200AP available for Low Temperature operation and 3717F available for High Temperature operation in parts washing/cleaning systems.

Floating Head (6682) and Portable Systems (5040) also available.



Easy to read graduations on translucent barrel.



Standard Operation Float Kit (6682)

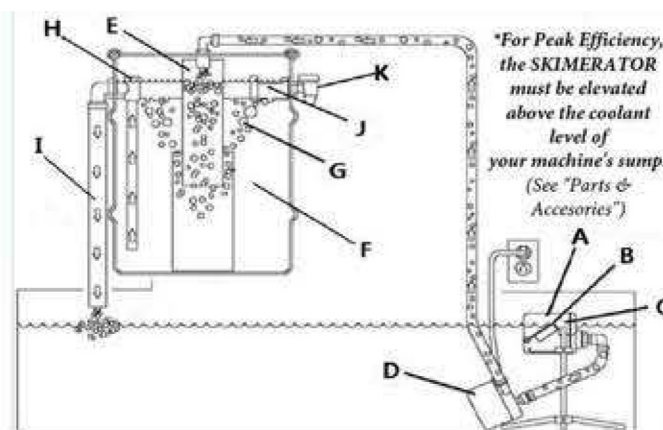


High Temperature Float Kit (6682-XD)

## How it works

The Original SKIMERATOR just got better! The new design offers the most attractive, lowest operation cost skimming product in the industry.

1. Oily coolant is skimmed off of surface at the Skimmer Box (A).
2. The floating gate (B) allows continuous action as coolant levels fluctuate in your machine's coolant sump.
3. Solid particles that enter the skimmer box are captured by the removable screen (C).
4. The electric or (optional air) pump (D), pumps oily coolant from Skimmer Box to the Reservoir (E) where the first stage of aeration occurs.
5. As the oily coolant discharges into the baffle (F), the oil floats to the top of the tank (G).
6. Cleaner and partially aerated coolant settles in the tank where it is then forced up the small stand tube (H) by pressure created from continuous fluid pumped into the system.
7. Cleaner coolant is returned to your machine's coolant sump as it drops from the large stand tube (I) creating the second stage of aeration.
8. When oil has accumulated in the tank above the weir assembly (J), oil may simply be drained off via the drain valve (K) into a hose, container, etc.



\*For Peak Efficiency, the SKIMERATOR must be elevated above the coolant level of your machine's sump. (See "Parts & Accessories")

## Parts & Accessories

SKIMERATOR PARTS & ACCESSORIES			
Part #	Description	Part #	Description
3203	Stand Tube Assy	4599	12" Skimerator Stand
3224	Flow Restrictor	4663	Float Shallow Draw w/screw
3225	PVC Tube 1/2" IDx3/4" OD	5040	Stand with Wheels
3226	PVC Tube 1" ID x 1-1/4 OD	5189	Faucet adapter
3230	O-Ring 1/8"x1"IDx1-1/4	5413	Air Pump-Normal Temp
3246	Foot Weldment	5508	Skim Reducer Assembly
3262	Pump type 2 115V	6698	External Box Screen
4359	Trash Screen, Shallow	6766	Gasket, Reservoir Tank
4427	Skim Reservoir Type 2 Tank	6877	Valve Ball, Teflon
4428	Boxy assy shallow draft	6682	Shallow Draft Floating Head
4429	Skim Box Deep Draft	6682-XD	High-Temp Float Kit
4430	Weir Box Assy	6682-CPF	Float Kit

