

- 1
- 2
- 3
- 4
- 5
- 6



3515 HD



Standard accessories



1 Set of hard top jaws



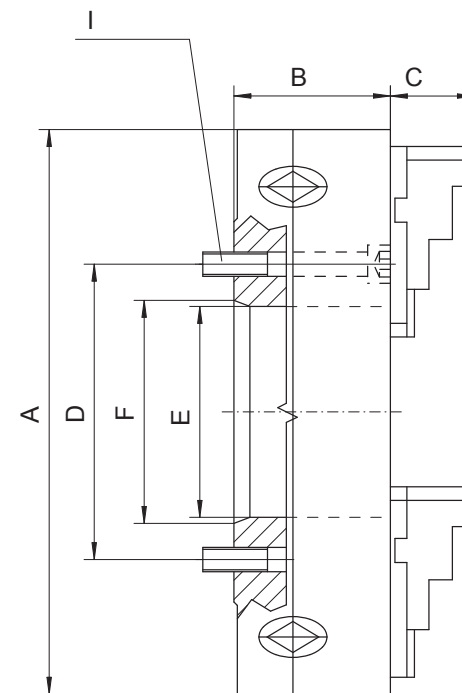
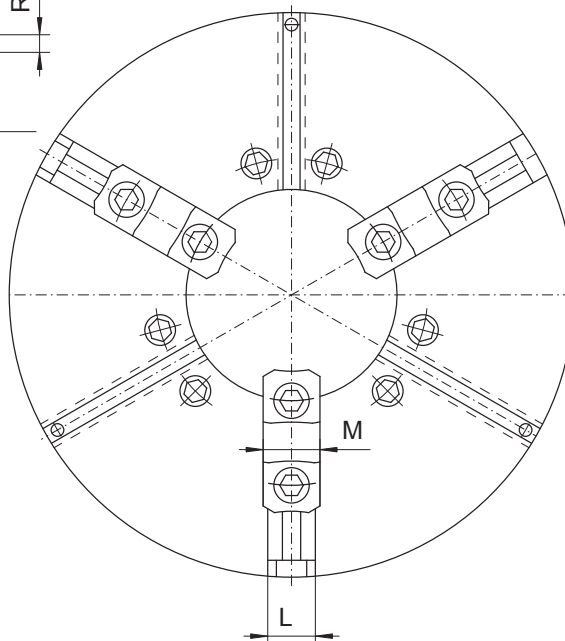
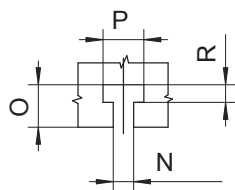
1 Set of hard master jaws



1 Wrench

Spare parts 99-141

Technical data 142-148



- BISON OIL COUNTRY CHUCKS HD with large through-holes are designed for gripping long and heavy workpieces or pipes during heavy-duty (HD) machining
- Hardened and ground working surfaces
- Balanced scroll plate
- High gripping force
- High accuracy
- Heavy-duty operations
- Chucks can work individually or in pairs, mounted on opposite sides of the lathe spindle

* - Indirect mount (chuck provided with a fully machined adapter plate)

Code No.	Type
7-825-1606	3515-16"-6-4.0" HD
7-825-1608	3515-16"-8-5.3" HD
7-825-1611	3515-16"-11-5" HD
7-825-2011	3515-20"-11-7.5" HD
7-825-2025	3515-20"-15-8" HD
7-825-2515	3515-25"-15-10.75" HD
7-825-2520	3515-25"-20-12.5" HD
7-825-3215	3515-32"-15-10.75" HD
7-825-3220	3515-32"-20-12.5" HD

A [in]	Taper Size	B [in]	C [in]	D [in]	E [in]	F [in]	I	L [in]	M [in]	N H10	O [in]	P [in]	R [in]	Clamping range [in]	Torque on wrench [lb/ft]	Gripping force [lbf]	Max. rpm	Max. workpiece weight [lbs]	Chuck Weight [lbs]
15.75	6	4.37	3.43	5.25	4.06	4.19	8xM12x4.33"	1.97	2.13	0.55	0.83	0.91	0.39	0.98 - 15.75	222	14,840	1,400	6,500	224.87
15.75	8	4.37	3.43	6.75	5.35	5.50	6xM16x4.33"	1.97	2.13	0.55	0.83	0.91	0.39	0.98 - 15.75	222	14,840	1,400	6,500	216.05
15.75	11	4.37	3.43	6.50	5.12	7.75	6xM20x3.94"	1.97	2.13	0.55	0.83	0.91	0.39	0.98 - 15.75	222	14,840	1,400	6,500	211.64
19.69	11	4.69	3.43	9.25	7.56	7.75	6xM20x4.72"	1.97	2.13	0.55	0.83	0.91	0.39	1.77 - 19.69	281	17,310	1,000	10,400	346.13
19.69	15*	5.93	3.43	13.00	8.00	11.25	6xM24x1.97"	1.97	2.13	0.55	0.83	0.91	0.39	1.77 - 19.69	281	17,310	1,000	10,400	388.08
24.80	15	5.67	3.64	13.00	10.83	11.25	6xM24x5.91"	2.76	2.95	0.79	1.30	1.46	0.63	3.15 - 24.80	296	18,430	850	15,600	612.88
24.80	20*	5.67	3.64	14.50	12.60	16.25	6xM24x2.16"	2.76	2.95	0.79	1.30	1.46	0.63	6.30 - 24.80	296	18,430	850	15,600	555.56
31.50	15	5.91	3.64	13.00	10.75	11.25	6xM24x5.91"	2.76	2.95	0.79	1.30	1.46	0.63	5.12 - 31.50	435	25,500	600	20,800	1,109.0
31.50	20	5.91	3.64	18.25	12.55	16.25	6xM24x5.91"	2.76	2.95	0.79	1.30	1.46	0.63	7.09 - 31.50	435	25,500	600	20,800	1,078.0

Larger diameters available on page 82-93!