

1

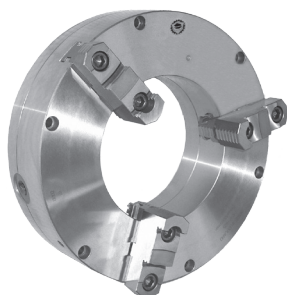
2

3

4

5

6

**3597**

## Standard accessories



1 Set of hard top jaws

1 Set of soft top jaws<sup>1)</sup>

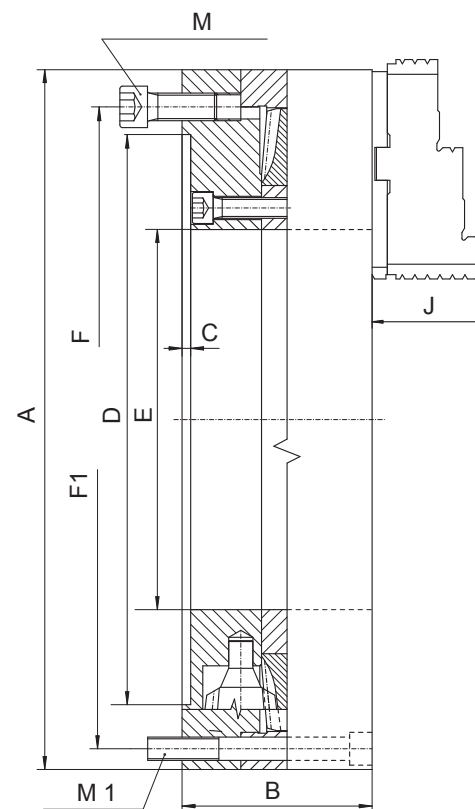
1 Set of hard master jaws



1 Wrench

Spare parts 99-141

Technical data 142-148

<sup>1)</sup> Soft top jaws not included with 3597-12" and 3597-20"

- BISON OIL COUNTRY CHUCKS with large through-holes are designed for gripping long workpieces or pipes during machining
- Hardened and ground working surfaces
- Balanced scroll plate
- High gripping force
- High accuracy
- Chucks can work individually or in pairs, mounted on opposite sides of the lathe spindle

Code No.	Type
7-819-1200S	3597-12"
7-819-1600S	3597-16"
7-819-2000S	3597-20"
7-819-2600S	3597-26"

A [in]	B [in]	C [in]	D [in]	E [in]	F [in]	F1 [in]	J [in]	M	M1	Clamping range [in]	Max. rpm	Weight [lbs]
12.40	3.82	0.20	10.24	5.71	11.26	11.26	2.24	3xM16	3xM16	1.57 - 12.40	2,500	103.62
15.94	4.33	0.20	12.99	8.66	14.25	15.00	2.64	6xM16	6xM12	5.43 - 15.98	1,000	160.94
20.28	4.72	0.20	16.54	12.60	18.03	18.96	3.11	6xM16	6xM16	4.72 - 19.69	800	264.55
25.98	5.51	0.28	21.46	15.98	23.07	24.41	3.43	6xM16	6xM16	19.69 - 24.80	600	507.06

Larger diameters available on page 82-93!



Type of mounting



Material of chuck body



Number of jaws



Type of jaws