



CH	-	30	-	XX	-	XX
-----------	---	-----------	---	-----------	---	-----------

Tool Series

CH = Chipping Hammer, Pistol Grip

Stroke

30 = 3"

Nose Type

RD = Round

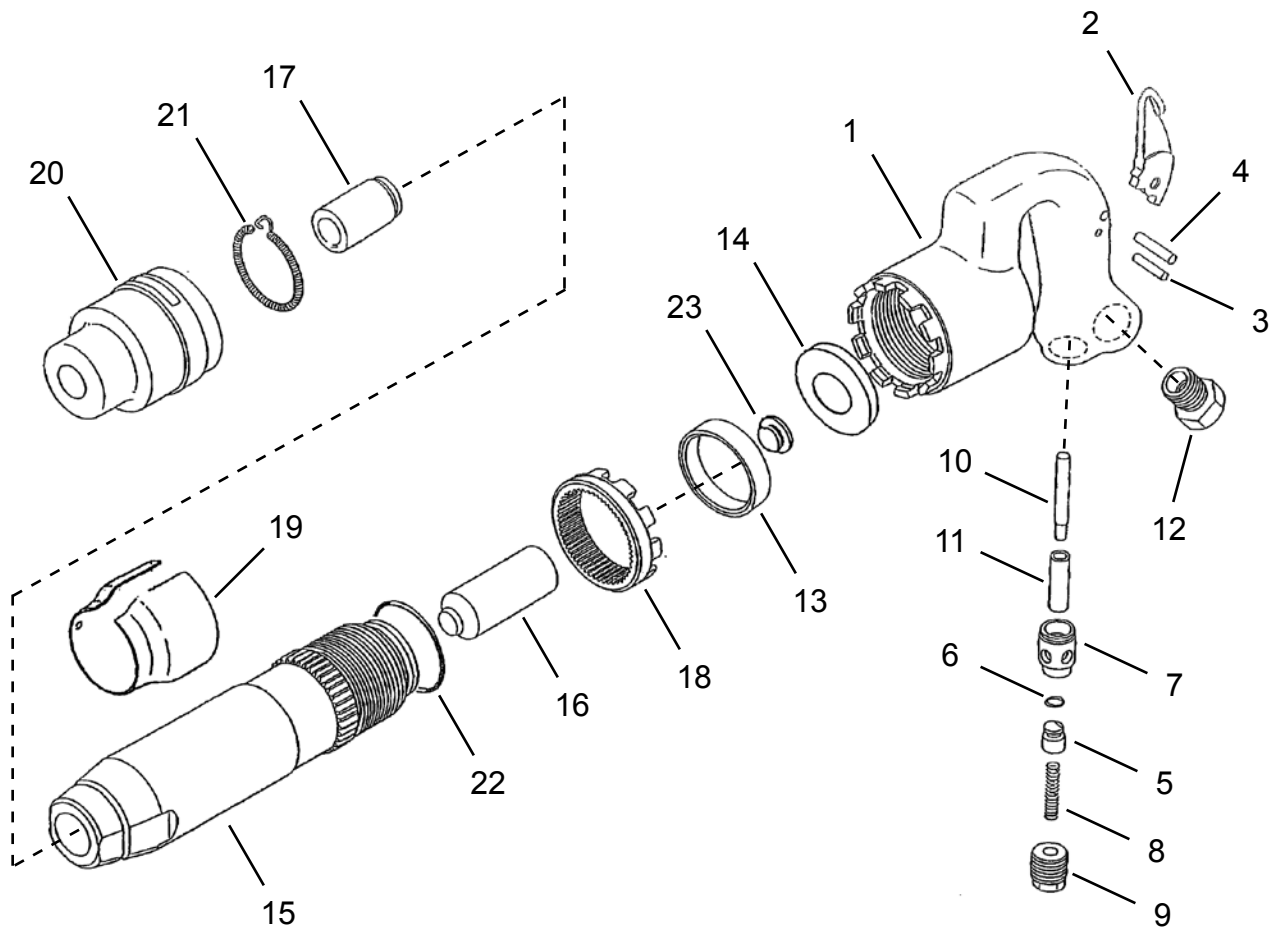
HX = Hexagon

Retainer

Blank = Standard Retainer

QC = Quick Change

“A”



Chisel Installation Procedure:

1. Remove retainer spring (#21) from retainer (#20)
2. Remove retainer (#20) from cylinder (#15)
3. Install chisel into bushing (#17) inside cylinder (#15)
4. Slide retainer (#20) over chisel and onto cylinder (#15)
5. Insert retainer spring (#21) into the slot of the retainer (#20)
6. Push retainer spring (#21) completely into the slot around the groove machined into the cylinder (#15) until the clip-on spring is exposed.
7. For chisel removal, repeat steps 1-6.

Cleco®
Chipping Hammer

PL30-CH30
12/09/2010

Illustration "A"

Ref	Number	#	X	EN
				Description
1	207046	1		Handle (Includes Ref. 5)
2	207047	1	2	Lever
3	207048	1	2	Pin (6 x 20)
4	207049	1	2	Pin (5 x 20)
5	207050	1		Valve
6	207051	1	2	O-Ring (P7)
7	207052	1		Bushing
8	207053	1	1	Spring
9	207054	1		Valve Cap
10	207055	1		Push Rod
11	207056	1		Push Rod Sleeve
12	207057	1	2	Inlet Bushing (3/8 x 3/8)
13	207058	1		Ring Valve
14	207261	1		Valve Plate
15	207060	1		Cylinder
16	207061	1	2	Piston
17	Table "A"	1	2	Bushing
18	207262	1		Clutch
19	207259	1		Exhaust Band
20	Table "A"	1		Retainer
21	207068	1	2	Retaining Spring
22	207069	1	2	O-Ring (P50)
23	207260	1		Valve Seat

(#) Quantity

(X) Recommended Spare Parts

Table "A"

Ref.	Description	#	CH-30-HX-QC	#	CH-30-HX	#	CH-30-RD-QC	#	CH-30-RD
17	Shank Bushing (Hex)	1	207062	1	207062		---		---
	Shank Bushing (Round)		---		---	1	207063	1	207063
20	Standard Retainer		---	1	207066		---	1	207066
	Quick Change Retainer	1	207067		---	1	207067		---