

Parts Manual
45-8179EN
11/29/2012

DOTCO[®]

12R03 Series
0.1 HP Vertical Pencil Grinder



For additional product information visit our website at <http://www.apextoolgroup.com>

Dotco®
Nomenclature

12	R	03	-	X	X
-----------	----------	-----------	----------	----------	----------

Series

12 = Ergo Grinder

Throttle Type

R = Roll Throttle

Motor Size

03 = 0.1 hp

Overhose Length

1 = 1' (0.3M)

2 = 2' (0.6M)

4 = 4' (1.2M)

Collet Size

2 = 2.35 mm

3 = 3.00 mm

6 = 3/32"

8 = 1/8"

Description and Instructions**Language Version:**

This Parts Manual is the ***“Original Instructions”*** intended for all persons who will use or repair these tools.

Product Identification:

Refer to the “Model Nomenclature” page in this document.

Noise and Vibration:

Refer to documents CE-1007DC and CE-1007TD.

General Description:

Air powered gearless right angle pencil grinder with rear exhaust.

Intended Use:

These grinders are intended for material removal applications. Use only for their designated purpose. Do not use as a hammer, lever or other improper usage that can cause tool damage and operator injury.

Copyright protection:

Apex Tool Group, LLC reserves the right to modify, supplement or improve this document or the product without prior notice. This document may not be reproduced in any way, shape or form, in full or parts thereof, or copied to another natural or machine readable language or to a data carrier, whether electronic, mechanical, optical or otherwise without the express permission of Apex Tool Group, LLC.

General Safety:

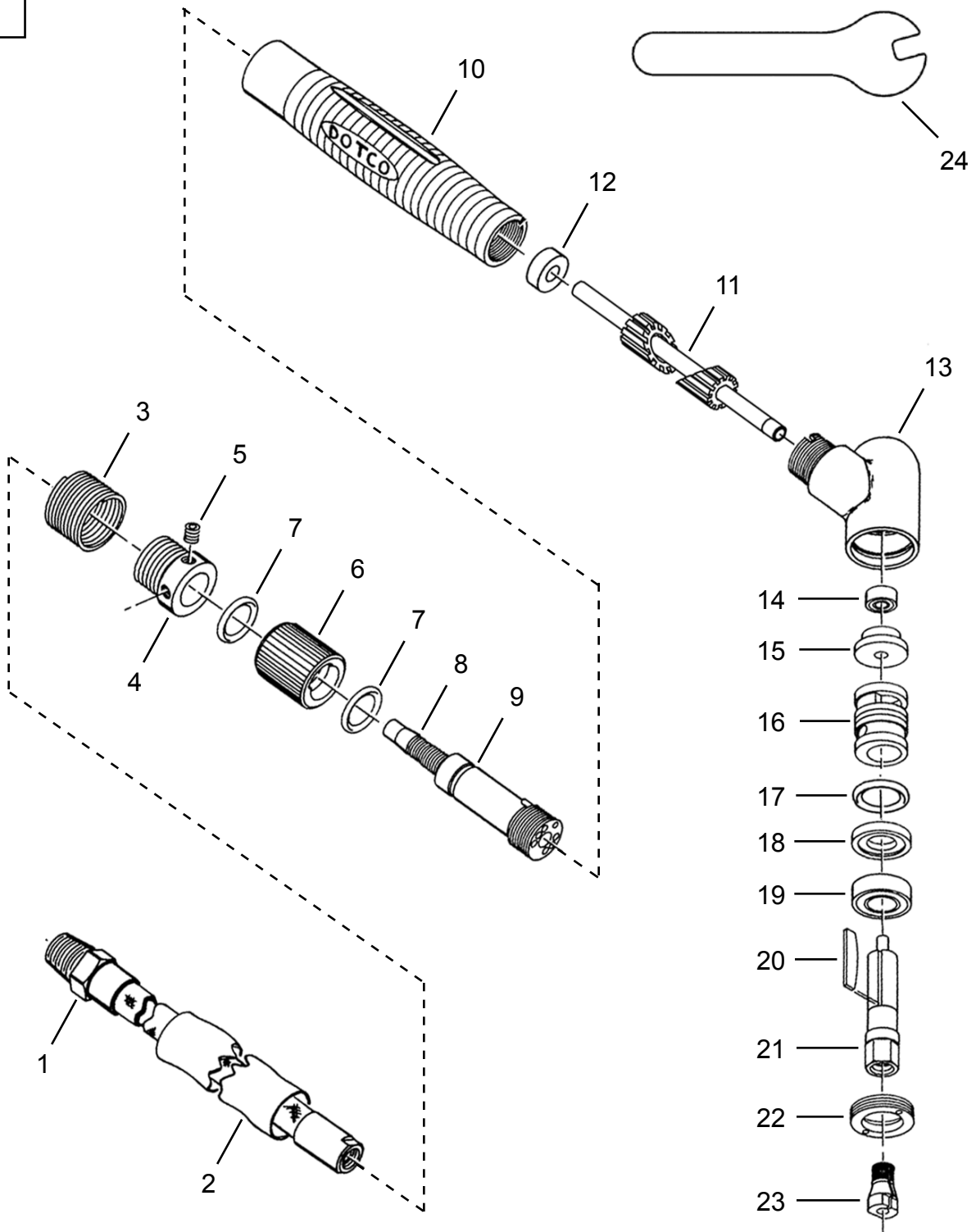
Refer to General Safety document, CE-2007 for general safety operating instructions for this equipment.

Lubrication:

Refer to lubrication document, PL65-LUB, for general lubrication instructions.

Dotco®
12R03 Vertical Pencil Grinder

“A”



Dotco®
12R03 Vertical Pencil Grinder

45-8179EN
11/29/2012

Illustration "A"

Ref	Number	#	X	EN	
				Description	
1	45-0948	1		Whip Hose Assembly (3/16" x 5')	
2	Table "A"	1		Overhose Assembly	
3	6061PT	1	1	Overhose Spring	
4	01-0917	1		Exhaust Adapter	
5	6057PT	1	2	Set Screw	
6	01-0935	1		Roll Valve (includes Ref. 7)	
7	6050PT	2	6	O-Ring	
8	01-0929	1		Valve Body (includes Ref. 9)	
9	954PT	1	2	Pin	
10	01-6060	1		Housing	
11	01-0912	1		Inlet Tube (includes Ref. 12)	
12	01-0916	1	3	Muffler	
13	01-0913	1		Angle Housing	
14	585PT	1	2	Ball Bearing	
15	01-0900	1		Rear Plate	
16	01-0905	1		Cylinder (includes Ref. 17)	
17	1057PT	1	3	O-Ring	
18	01-0906	1		Front Plate	
19	583PT	1	2	Ball Bearing	
20	01-0907	3	9	Rotor Blade	
21	01-0910	1		Rotor	
22	01-0909	1		Lock Ring	
23	Table "A1"	1	2	Collet	
24	14-0805	1		5/16" Wrench	
	14-0876	1		6mm Wrench	

(#) Quantity

(X) Recommended Spare Parts (quantity shown based on 1-5 tools in operation)

Table "A"

Ref.	Description	Overhose Length		
		1' (0.3M)	2' (0.6M)	4' (1.2M)
--	Termination Code	1	2	3
--	Overhose Assembly	45-6003	45-6002	45-6001
2	Overhose	45-0945S	45-0955S	45-0956S

Table "A1"

Ref.	Collet Number	Collet Size	Termination Code
23	01-0100	1/8"	8
	01-0102	3/32"	6
	01-0148	3.00mm	3
	01-0131	2.35mm	2