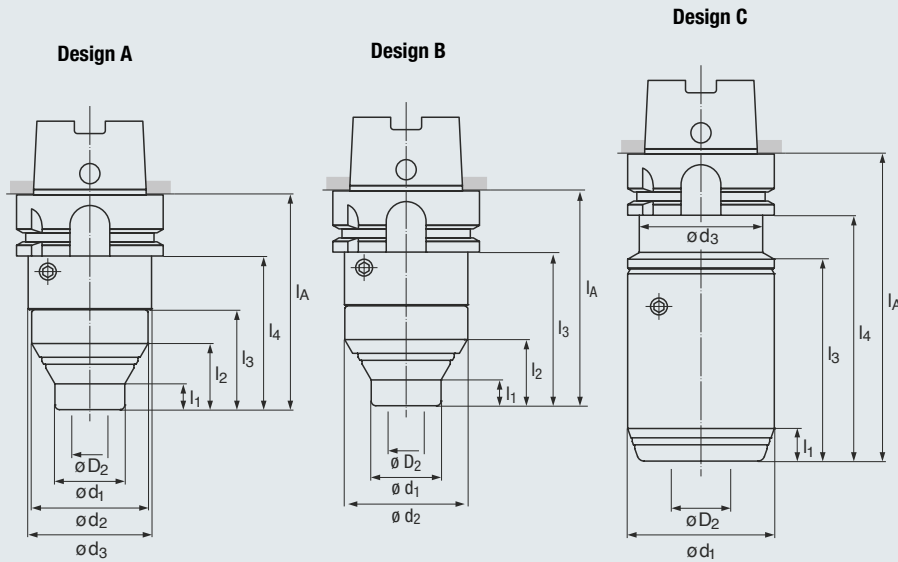


- Hollow taper shank acc. DIN 69893-1
- Concentricity  $\leq 3 \mu\text{m}$  at projection length of 3 x dia.
- Internal coolant supply

**HSK-A**

FPC  $\leq 3 \mu\text{m}$

G2.5  
20000 min<sup>-1</sup>



Icon descriptions (see page 11)

### HSK-A63

SIZE	D2 (RANGE)	Design	d <sub>1</sub>	d <sub>2</sub>	d <sub>3</sub>	l <sub>1</sub>	l <sub>2</sub>	l <sub>3</sub>	l <sub>4</sub>	l <sub>A</sub>	EDP no.	
FPC14	1/8" - 9/16"	2 mm - 14 mm	A	30	50	53	11	28	43	66	92	6492.631409
FPC14	1/8" - 9/16"	2 mm - 14 mm	A	30	50	53	61	78	93	116	142	6492.631414
FPC14	1/8" - 9/16"	2 mm - 14 mm	A	30	50	53	85	103	129	152	178	6492.631417
FPC20	1/8" - 3/4"	2 mm - 20 mm	B	40	53	-	20	31	66	-	92	6492.632009
FPC20	1/8" - 3/4"	2 mm - 20 mm	B	40	53	-	69	81	116	-	142	6492.632014
FPC20	1/8" - 3/4"	2 mm - 20 mm	B	40	53	-	94	105	152	-	178	6492.632017
FPC25	5/8" - 1 1/4"	16 mm - 32 mm	C	63	-	53	14	-	87	106	132	6492.632513

### HSK-A80

SIZE	D2 (RANGE)	Design	d <sub>1</sub>	d <sub>2</sub>	d <sub>3</sub>	l <sub>1</sub>	l <sub>2</sub>	l <sub>3</sub>	l <sub>4</sub>	l <sub>A</sub>	EDP no.	
FPC20	1/8" - 3/4"	2 mm - 20 mm	B	40	63	-	18	38	72	-	98	6492.802009
FPC25	5/8" - 1 1/4"	16 mm - 32 mm	C	63	-	-	14	-	-	111	137	6492.802513

### HSK-A100

SIZE	D2 (RANGE)	Design	d <sub>1</sub>	d <sub>2</sub>	d <sub>3</sub>	l <sub>1</sub>	l <sub>2</sub>	l <sub>3</sub>	l <sub>4</sub>	l <sub>A</sub>	EDP no.	
FPC20	1/8" - 3/4"	2 mm - 20 mm	A	40	63	70	18	38	43	71	100	6492.102010
FPC20	1/8" - 3/4"	2 mm - 20 mm	A	40	63	70	84	104	129	157	186	6492.102018
FPC25	5/8" - 1 1/4"	16 mm - 32 mm	C	70	-	-	15	-	-	110	139	6492.102514

### HSK-F63

SIZE	D2 (RANGE)	Design	d <sub>1</sub>	d <sub>2</sub>	d <sub>3</sub>	l <sub>1</sub>	l <sub>2</sub>	l <sub>3</sub>	l <sub>4</sub>	l <sub>A</sub>	EDP no.	
FPC20	1/8" - 3/4"	2 mm - 20 mm	B	40	53	-	20	31	66	-	92	6497.632009