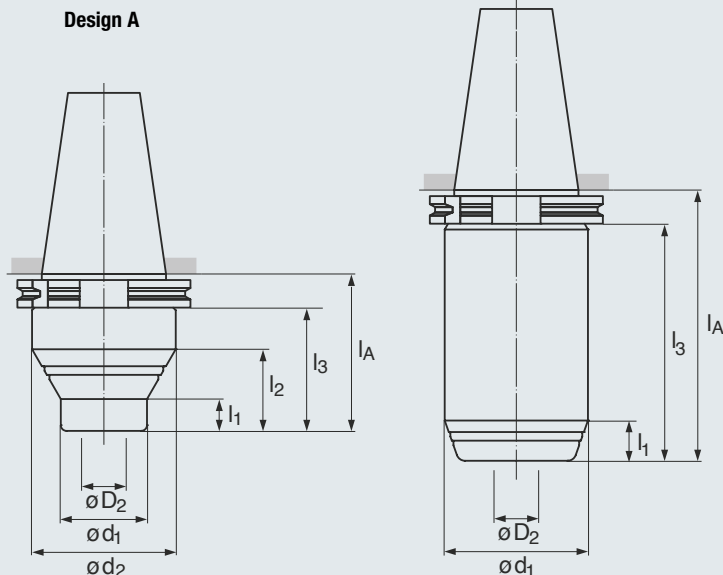
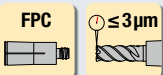


- ISO taper shank acc. DIN ISO 7388-1 (formerly DIN 69871)
- Taper quality AT3
- Concentricity $\leq 3 \mu\text{m}$ at projection length of 3 x dia.
- Internal coolant supply

SK (ISO)



Icon descriptions (see page 11)

SK30

SIZE	D2 (RANGE)	Design	d_1	d_2	l_1	l_2	l_3	l_A	EDP no.	
FPC14	1/8" - 9/16"	2 mm - 14 mm	A	30	50	11	28	73	92	6491.301409
FPC14	1/8" - 9/16"	2 mm - 14 mm	A	40	50	20	28	73	92	6491.302009

SK40

SIZE	D2 (RANGE)	Design	d_1	d_2	l_1	l_2	l_3	l_A	EDP no.	
FPC14	1/8" - 9/16"	2 mm - 14 mm	A	30	50	11	28	43	62	6491.401406
FPC14	1/8" - 9/16"	2 mm - 14 mm	A	30	50	61	78	93	112	6491.401411
FPC14	1/8" - 9/16"	2 mm - 14 mm	A	30	50	85	103	129	149	6491.401414
FPC20	1/8" - 3/4"	2 mm - 20 mm	A	40	50	20	28	43	63	6491.402006
FPC20	1/8" - 3/4"	2 mm - 20 mm	A	40	50	69	78	93	112	6491.402110
FPC20	1/8" - 3/4"	2 mm - 20 mm	A	40	50	94	103	129	149	6491.402140
FPC25	5/8" - 1 1/4"	16 mm - 32 mm	B	63	-	14	-	83	102	6491.402510

SK50

SIZE	D2 (RANGE)	Design	d_1	d_2	l_1	l_2	l_3	l_A	EDP no.	
FPC20	1/8" - 3/4"	2 mm - 20 mm	A	40	63	18	38	43	62	6491.502006
FPC20	1/8" - 3/4"	2 mm - 20 mm	A	40	63	84	104	129	149	6491.502014
FPC25	5/8" - 1 1/4"	16 mm - 32 mm	B	70	-	15	-	83	102	6491.502510

Pull studs available upon request