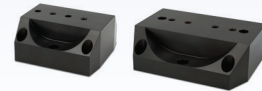


# MaxLock™ 5 Axis Vise



Shown with optional riser base

- Self-centering vise for five axis machining.
- $\pm 0.0002''$  repeatability.
- Adjustable Center Line.
- Machinable Jaws – choice of aluminum or steel.
- The customer will machine in a step for higher accuracy eliminating the need for parallels.
- Holds up to a 6-1/2" long parts with model SCM425.
- Clamp both OD and ID.
- Kurt AngLock design pulls the part down.
- 2-1/2" & 4" jaw widths.
- Tall jaws for increased spindle clearance.
- Jaws are reversible.
- Flexible mounting options.
- Hex keys required for jaw removal:  
SCM250: 5/64", 3/32"  
SCM425: 3/32", 1/8"



Optional riser bases:  
SCM250-RISER KIT  
SCM425-RISER KIT



Optional mounting pallets – contact factory for options

DIMENSIONAL DATA			SCM250 CLAMPING FORCE LBS.		SCM425 CLAMPING FORCE LBS.		JAW KITS (INCLUDES TWO JAWS)				
	SCM425	SCM250	Ft. Lbs	Lbs Force	Ft. Lbs	Lbs Force	Part Number	Length	Width	Height	Weight
	SCM425AL	SCM250AL									
A	2.313	2.000	10	350	10	500	SCM250AL-JAWKIT Aluminum Jaw Kit	2.00	2.50	1.50	2
B	4.000	2.500	20	750	20	1,000	SCM425AL-JAWKIT Aluminum Jaw Kit	2.75	4.00	2.25	5
C	8.000	5.000	30	1,300	30	1,500	SCM250C-JAWKIT Steel Jaw Kit	2.00	2.50	1.50	4
D	4.000	2.500	40	1,800	40	2,000	SCM425C-JAWKIT Steel Jaw Kit	2.75	4.00	2.25	12
E	0.69	0.69				50					
F	1.12	1.11				60					
G	3/8	5/16									
H	2.25	1.50									
J	2.75	2.00									
K	9.12	6.11									
L	1.625	1.344									
M	1.125	0.940									
N	0.000	0.000									
P	2.500	1.000									
Q	0.531 $\emptyset$	0.406 $\emptyset$									
S	1.000	1.000									
T	1.250	-									
U1	3.000	-									
U2	3.000	2.000									
U3	1.500	-									
U4	1.500	-									
V	0.625	0.375									
W	0.688	0.500									
X	0.375	-									
Y	0.500	-									
Z	1.750	-									
Est Ship Weight	30 Lbs	10 Lbs									

