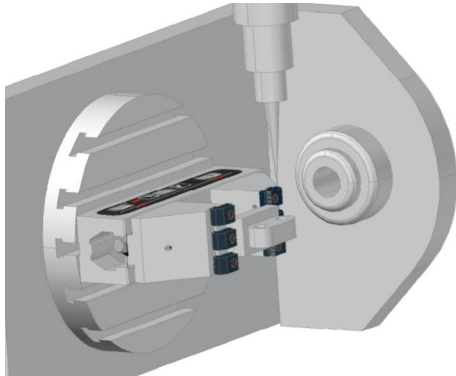
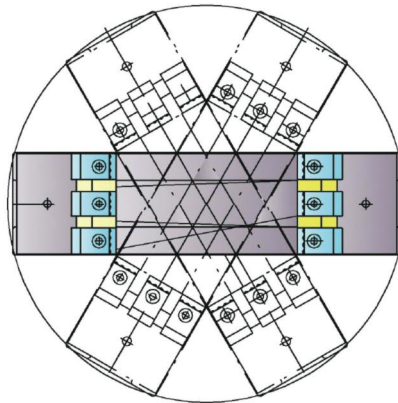


## Dual Force Precision 5-Axis Machine Vise Features



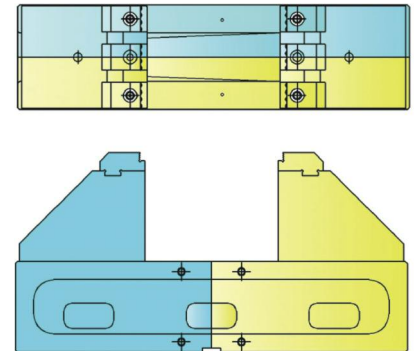
### Obstruction Free 5-Axis Machining

These unique vises deliver unrestricted all around access from 5 sides to the workpiece



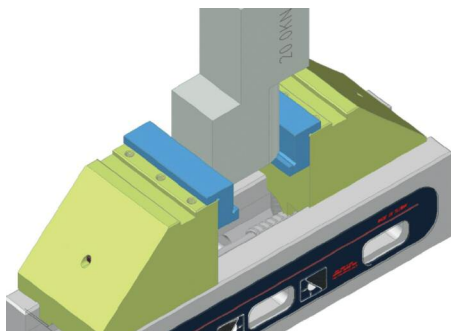
### Space Saving Design

Within an operating window up to a 500mm diameter the spindle, nut or handle do not extend beyond the end of the vise body eliminating any interference.



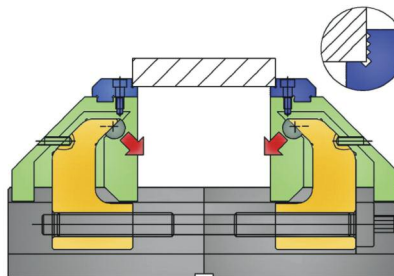
### Symmetrical Positioning

The center line of the opening of the vise is symmetrical to the sides and the length of the vise body for accurate machining on multiple axis.



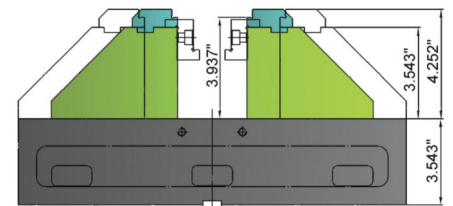
### High Clamping Force

Repeatable and controllable clamping forces up to 4500 pounds.



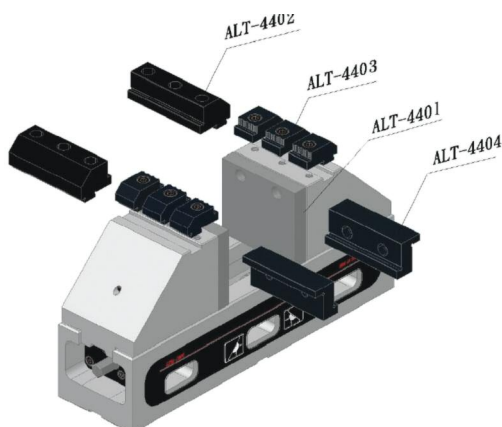
### Dual Force Anti-Lift Mechanism

Dual force design produces all directional alignment with 1/2 pound of downward force for every pound of horizontal force.



### Vise Structure

The higher structure delivers a well-balanced design that provides better clearance for movements of the machine spindle, the worktable, and the part itself, without creating interference areas.



### Comprehensive Jaw Selection

Each Palmgren 5-axis vise comes with a versatile range of 4 different jaw sets.

ALT-4401 - Block Jaw Plates

ALT-4402 - Step Jaw Plates for small parts

ALT-4403 - Serrated Tooth Jaw Plates for round and odd shaped parts

ALT-4404 - Step Jaw Plates for large parts

Included